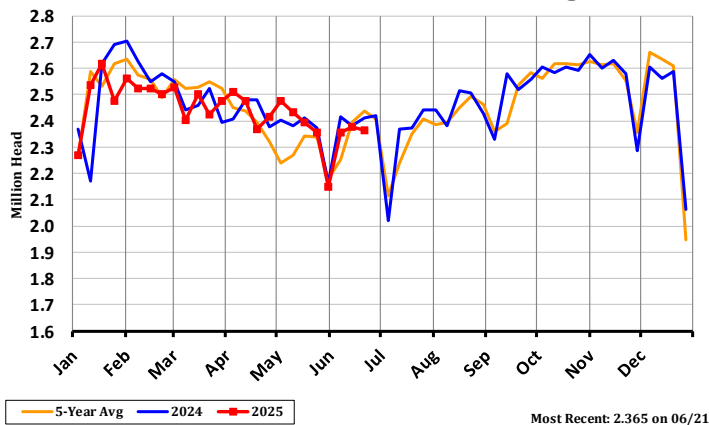


Friday, June 20, 2025

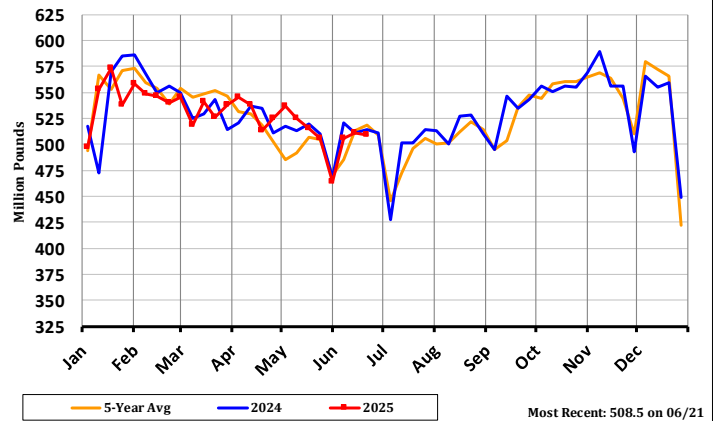
### Hog Slaughter - Recent History

Date	Slaughter				Pork Production			
	Current	Year Ago	Year Ago % Change	5 Year Average	Current	Year Ago	Year Ago % Change	5 Year Average
	<i>Head</i>	<i>Head</i>		<i>Head</i>	<i>Mil Lbs</i>	<i>Mil Lbs</i>		<i>Mil Lbs</i>
3/1/2025	2,525,170	2,550,467	-1.0%	2,555,043	545.0	549.8	-0.9%	553.3
3/8/2025	2,401,047	2,440,332	-1.6%	2,520,875	518.1	525.3	-1.4%	545.7
3/15/2025	2,501,000	2,456,991	1.8%	2,528,501	541.4	528.6	2.4%	548.0
3/22/2025	2,424,175	2,520,684	-3.8%	2,548,324	525.5	543.1	-3.2%	552.0
3/29/2025	2,476,591	2,393,746	3.5%	2,522,834	537.4	514.1	4.5%	545.9
4/5/2025	2,509,486	2,408,223	4.2%	2,449,977	544.9	520.9	4.6%	531.1
4/12/2025	2,476,501	2,481,486	-0.2%	2,437,081	537.6	536.7	0.2%	528.6
4/19/2025	2,367,223	2,480,603	-4.6%	2,394,206	513.3	534.8	-4.0%	518.6
4/26/2025	2,415,946	2,377,844	1.6%	2,319,301	524.7	511.4	2.6%	502.4
5/3/2025	2,476,311	2,402,816	3.1%	2,240,791	536.2	517.0	3.7%	484.9
5/10/2025	2,431,585	2,380,123	2.2%	2,269,139	524.3	513.0	2.2%	491.6
5/17/2025	2,392,192	2,412,357	-0.8%	2,339,923	514.8	519.4	-0.9%	506.3
5/24/2025	2,356,490	2,371,081	-0.6%	2,338,548	506.0	509.3	-0.6%	504.3
5/31/2025	2,150,313	2,162,210	-0.6%	2,178,458	463.8	468.1	-0.9%	469.8
6/7/2025	2,352,907	2,415,772	-2.6%	2,250,861	505.1	520.4	-2.9%	485.6
6/14/2025(e)	2,375,000	2,382,352	-0.3%	2,393,854	511.1	510.5	0.1%	513.0
6/21/2025(e)	2,365,000	2,412,212	-2.0%	2,435,865	508.5	514.0	-1.1%	518.5

Weekly Hog Slaughter  
Current vs. Previous vs. 5 Year Avg



Weekly Pork Production  
Current vs. Previous vs. 5 Year Avg



\*\*\*This report includes information from sources believed to be reliable and accurate as of the date of this publication, but no independent verification has been made and we do not guarantee its accuracy or completeness. Opinions expressed are subject to change without notice. This report should not be construed as a request to engage in any transaction involving the purchase or sale of a futures contract and/or commodity option thereon. The risk of loss in trading futures contracts or commodity options can be substantial, and investors should carefully consider the inherent risks of such an investment in light of their financial condition. Any reproduction or retransmission of this report without the express written consent of The Hightower Report is strictly prohibited.