

The Hightower Report

Futures Analysis & Forecasting

MONTHLY SOYBEAN OIL STOCKS

June 2, 2025

US Soybean Oil Stocks (Billions of Pounds)

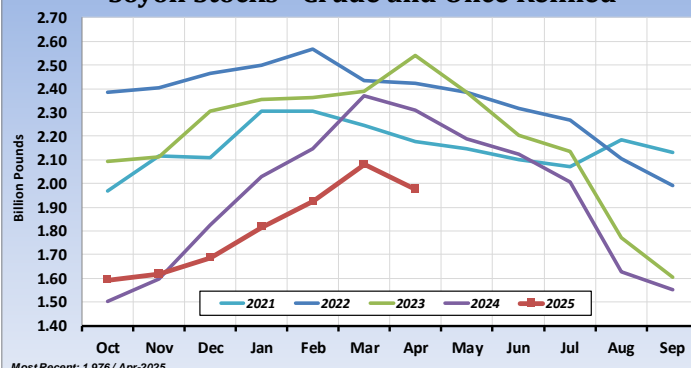
Date	Current Crop Year				History Since 2015				
	Current	Year Ago	Year Ago % Change	As % of USDA Est.	Average	Max	Max Year	Min	Min Year
Oct-24	1.592	1.502	6.03%	.11%	1.970	2.386	2021	1.502	2023
Nov-24	1.618	1.599	1.19%	.11%	2.003	2.406	2021	1.599	2023
Dec-24	1.687	1.824	-7.49%	.12%	2.131	2.466	2021	1.687	2024
Jan-25	1.817	2.028	-10.43%	.13%	2.258	2.500	2022	1.817	2025
Feb-25	1.924	2.147	-10.40%	.13%	2.318	2.566	2022	1.924	2025
Mar-25	2.080	2.369	-12.20%	.14%	2.332	2.444	2018	2.080	2025
Apr-25	1.976	2.311	-14.50%	.14%	2.385	2.689	2018	1.976	2025
May-25	-	2.188	-	-	2.293	2.466	2016	2.019	2019
Jun-25	-	2.125	-	-	2.202	2.424	2016	2.014	2019
Jul-25	-	2.009	-	-	2.170	2.384	2018	2.000	2017
Aug-25	-	1.629	-	-	2.004	2.215	2018	1.629	2024
Sep-25	-	1.551	-	-	1.892	2.131	2021	1.551	2024

Data begins May 2015 after USDA NASS started publication.

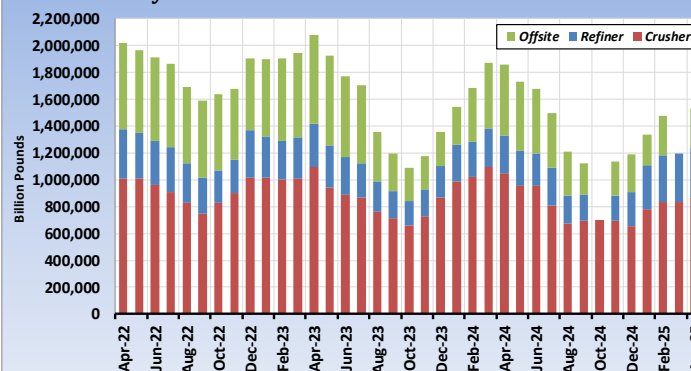
Average, Max and Min calculations look at USDA NASS data only.

US soybean oil stocks in April came in at 1.976 billion pounds versus 2.080 last month and 2.311 last year. The average stock level for this time of year is 2.385 billion pounds. The largest stock level for this month was 2.601 (2020) and lowest was 2.178 (2021). Current stock levels are running at 0.14% of USDA ending stocks estimates for the year.

Soyoil Stocks - Crude and Once Refined



Soyoil Stocks - Crusher vs Refiner vs Offsite



***This report includes information from sources believed to be reliable and accurate as of the date of this publication, but no independent verification has been made and we do not guarantee its accuracy or completeness. Opinions expressed are subject to change without notice. This report should not be construed as a request to engage in any transaction involving the purchase or sale of a futures contract and/or commodity option thereon. The risk of loss in trading futures contracts or commodity options can be substantial, and investors should carefully consider the inherent risks of such an investment in light of their financial condition. Any reproduction or retransmission of this report without the express written consent of The Hightower Report is strictly prohibited.