

The Hightower Report

Futures Analysis & Forecasting

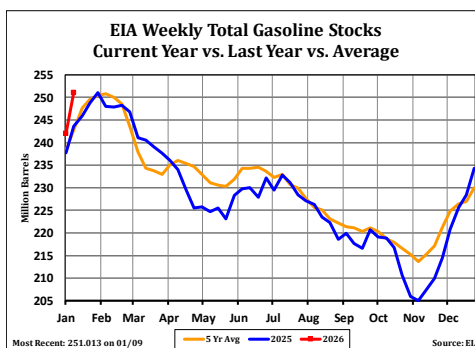
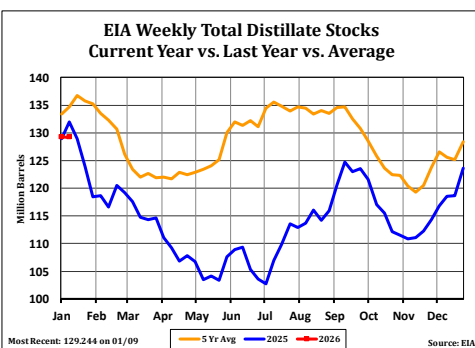
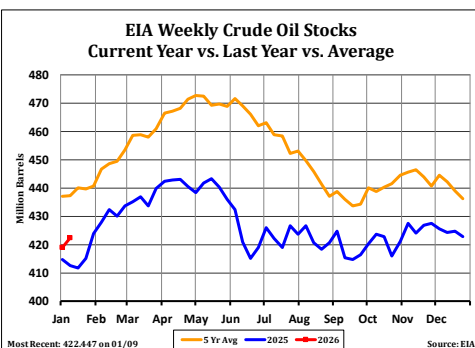
EIA Energy Stocks Report January 14, 2026

EIA Crude Oil (In Millions of Barrels)											
Week Of	Stocks				Highest Stocks		Lowest Stocks		Imports	Exports	Refinery(%)
	Current	Weekly Change	Yearly Change	5 Year Average	Stocks	Year	Stocks	Year	Current (Avg/Day)	Current (Avg/Day)	Current
12/12/2025	424.417	-1.274	3.401	442.263	500.096	2020	256.598	2003	6.525	4.664	94.80
12/19/2025	424.822	0.405	8.043	439.081	499.534	2020	258.243	2003	6.086	3.616	94.60
12/26/2025	422.888	-1.934	7.287	436.155	493.469	2020	254.466	2003	4.953	3.440	94.70
01/02/2026	419.056	-3.832	4.414	437.082	485.459	2021	252.611	2004	6.339	4.263	94.70
01/09/2026	422.447	3.391	9.767	437.326	485.456	2017	247.627	2004	7.092	4.306	95.30
01/16/2026					488.296	2017	248.839	2004			

EIA Gasoline (In Millions of Barrels)											
Week Of	Stocks				Highest Stocks		Lowest Stocks		Imports	Demand (Avg/Day)	
	Current	Weekly Change	Yearly Change	5 Year Average	Stocks	Year	Stocks	Year	Current (Avg/Day)	Current	Year Ago
12/12/2025	225.627	4.808	3.590	226.467	238.879	2020	191.420	1996	0.834	9.078	8.927
12/19/2025	228.489	2.862	4.822	226.920	239.260	2019	191.053	1996	0.668	8.942	9.008
12/26/2025	234.334	5.845	2.950	230.044	242.472	2019	192.014	1996	0.525	8.563	8.168
01/02/2026	242.036	7.702	4.322	238.260	251.609	2020	194.173	2000	0.549	8.170	8.481
01/09/2026	251.013	8.977	7.447	242.797	258.287	2020	198.240	2000	0.448	8.304	8.325
01/16/2026					260.032	2020	200.703	2001			8.086

EIA Distillate (In Millions of Barrels)											
Week Of	Stocks				Highest Stocks		Lowest Stocks		Imports	Demand (Avg/Day)	
	Current	Weekly Change	Yearly Change	5 Year Average	Stocks	Year	Stocks	Year	Current (Avg/Day)	Current	Year Ago
12/12/2025	118.500	1.712	0.345	125.625	164.363	2009	115.024	2023	0.268	3.786	4.498
12/19/2025	118.702	0.202	2.241	125.105	161.336	2009	111.143	1989	0.181	4.156	4.253
12/26/2025	123.679	4.977	0.812	128.393	160.959	2010	106.744	1989	0.283	3.379	3.232
01/02/2026	129.273	5.594	0.335	133.368	177.776	1983	109.207	1990	0.207	3.195	3.178
01/09/2026	129.244	-0.029	-2.771	134.740	175.056	1983	109.516	1990	0.220	4.096	3.839
01/16/2026					170.674	1983	110.647	2000			4.108

EIA Ultra Low Sulphur Diesel (ULSD) (In Millions of Barrels)									
Week Of	Stocks				Highest Stocks		Lowest Stocks		Imports
	Current	Weekly Change	Yearly Change	5 Year Average	Stocks	Year	Stocks	Year	Current (Avg/Day)
12/12/2025	107.806	1.447	-2.234	115.791	140.927	2020	1.083	2004	0.266
12/19/2025	108.209	0.403	-0.189	115.224	138.749	2020	1.014	2004	0.176
12/26/2025	113.132	4.923	-2.026	118.785	141.213	2020	1.063	2004	0.282
01/02/2026	118.002	4.870	-3.532	123.999	147.755	2017	1.255	2005	0.206
01/09/2026	118.719	0.717	-5.176	125.177	152.294	2021	1.067	2005	0.212
01/16/2026					152.016	2021	1.148	2005	

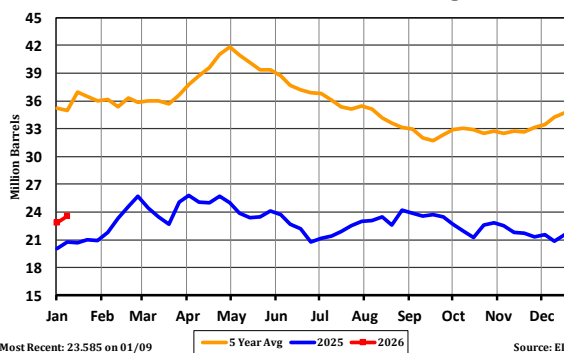


***This report includes information from sources believed to be reliable and accurate as of the date of this publication, but no independent verification has been made and we do not guarantee its accuracy or completeness. Opinions expressed are subject to change without notice. This report should not be construed as a request to engage in any transaction involving the purchase or sale of a futures contract and/or commodity option thereon. The risk of loss in trading futures contracts or commodity options can be substantial, and investors should carefully consider the inherent risks of such an investment in light of their financial condition. Any reproduction or retransmission of this report without the express written consent of The Hightower Report is strictly prohibited.

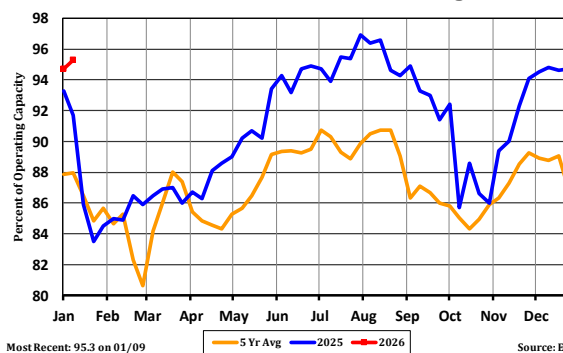
EIA Crude Oil Stocks - Cushing

Week Of	Stocks				Highest Stocks		Lowest Stocks	
	Current	Weekly Change	Yearly Change	5 Year Average	Stocks	Year	Stocks	Year
12/12/2025	20.862	-0.742	-2.140	34.262	66.508	2016	16.356	2004
12/19/2025	21.569	0.707	-1.113	34.748	66.263	2016	16.596	2004
12/26/2025	22.112	0.543	-0.428	35.126	66.435	2016	16.644	2004
01/02/2026	22.84	0.728	2.802	35.206	66.930	2017	15.925	2005
01/09/2026	23.585	0.745	2.782	35.011	65.656	2017	16.521	2008
01/16/2026					65.372	2017	15.653	2008

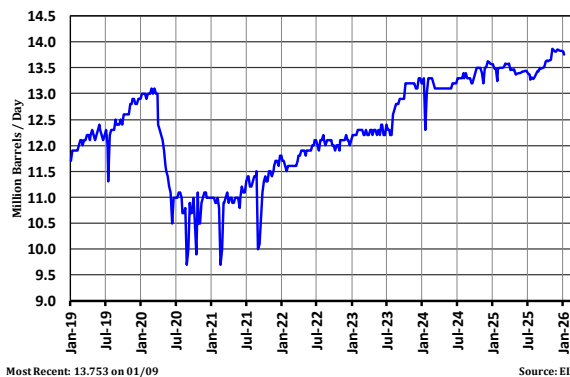
EIA Weekly Cushing Crude Oil Stocks
Current Year vs. Last Year vs. Average



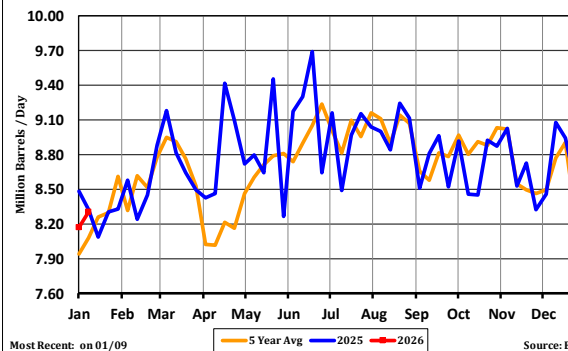
EIA Weekly Refinery Operating Rate
Current Year vs. Last Year vs. Average



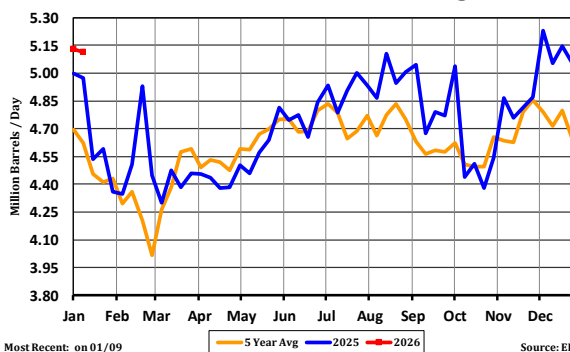
EIA Weekly Crude Oil Production



EIA Gasoline Demand
Current Year vs. Last Year vs. Average



EIA ULSD Demand
Current Year vs. Last Year vs. Average



***This report includes information from sources believed to be reliable and accurate as of the date of this publication, but no independent verification has been made and we do not guarantee its accuracy or completeness. Opinions expressed are subject to change without notice. This report should not be construed as a request to engage in any transaction involving the purchase or sale of a futures contract and/or commodity option thereon. The risk of loss in trading futures contracts or commodity options can be substantial, and investors should carefully consider the inherent risks of such an investment in light of their financial condition. Any reproduction or retransmission of this report without the express written consent of The Hightower Report is strictly prohibited.

***This report includes information from sources believed to be reliable and accurate as of the date of this publication, but no independent verification has been made and we do not guarantee its accuracy or completeness. Opinions expressed are subject to change without notice. This report should not be construed as a request to engage in any transaction involving the purchase or sale of a futures contract and/or commodity option thereon. The risk of loss in trading futures contracts or commodity options can be substantial, and investors should carefully consider the inherent risks of such an investment in light of their financial condition. Any reproduction or retransmission of this report without the express written consent of The Hightower Report is strictly prohibited.