

US Futures Weekly Report

Monday, March 14th, 2016

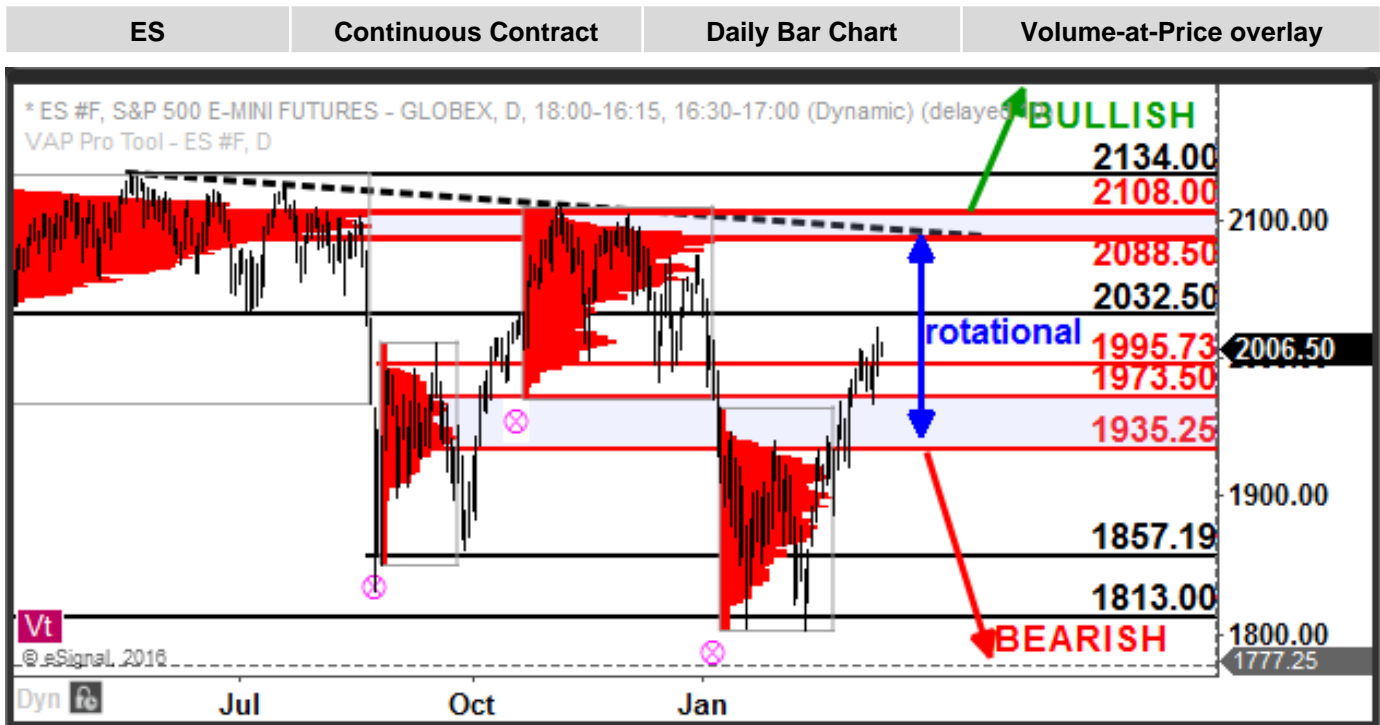
Highlights

Product (front month)	Bias	Comments
S&P 500 (ESM6)	➡	We favor a continuation higher above support at 1973-95
Nasdaq 100 (NQM6)	➡	We favor a further extension higher above 4331 targeting 4512-81
Russell 2000 (TFM6)	➡	We would expect further bullish action above 1099 targeting 1141-60
Euro FX (6EM6)	➡	We will now look for rotational action between 1.0750 and 1.1335
British Pound (6BM6)	⬇	look for a bounce if price establishes itself above 1.4127 targeting 1.4790-1.4875..
Canadian Dollar(6CM6)	➡	has finally bounced and we favor a continuation higher now that .7125 has held as support
Japanese Yen (6JM6)	⬆	has exploded above the .8663 level which now shifts higher as support.
US Dollar Index(DXM6)	➡	The US Dollar is now rotational after ailing to extend above the 100 level
30yr Bonds (ZBM6)	➡	Support at 163'04 has been breached. We favor further bearish action while below this level
10yr Notes (ZNM6)	➡	has broken support at 129'260-130'037. We favor a further pullback while below this level
Crude Oil (CLJ6)	⬇	has rallied after making a near-term double bottom at 25.87 as price trades into the 35.92-38.54.
Nat Gas (NGJ6)	⬇	We favor further bearish action while below 1.959.
Heating Oil (HOJ6)	➡	We favor a further bounce while above near-term support at 1.1204 which targets 1.3789.
Gold (GCJ6)	⬆	We favor further bullish action while above the 1187-1206 zone.
Silver (SIK6)	➡	Continues to act rotational between 14.49 and 15.58-16.21.
Copper (HGK6)	➡	Is bouncing from a near-term bottoming pattern.
Corn (ZCK6)	➡	Has bounced off rotational support at 346'0 with rotational resistance at 399'0
Wheat (ZWK6)	⬇	remains bearish below 464'2 as price continue to just drift lower.
Soybeans (ZSK6)	⬇	remains overall bearish below 917'7 while it consolidates between 851'7 and 917'7.
Soybean Oil (ZLK6)	⬆	pivoted of support at 29.54-30.77 and has traded into resistance at 32.69 before pulling back.
Soybean Meal (ZMK6)	➡	Look for rotational action between 262 and 276.
Lean Hogs (HEJ6)	➡	We favor a continuation higher while above 67 targeting 74.60.
Live Cattle (LEJ6)	➡	has broken its wedge to the upside which now targets 141-144 in extension

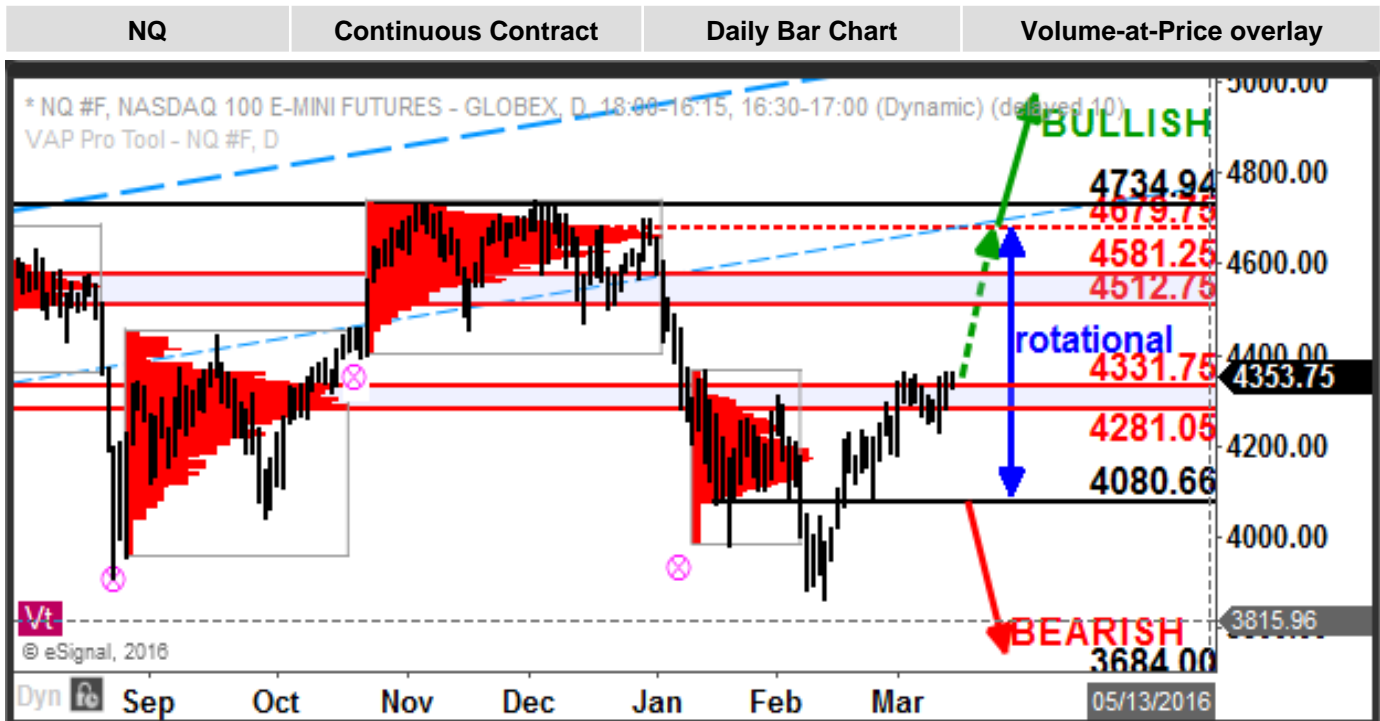
Table of Contents

Page 3:	E-mini S&P 500, E-mini Nasdaq-100
Page 4:	Mini Russell 2000, Euro FX
Page 5:	British Pound, Canadian Dollar
Page 6:	Japanese Yen, US Dollar Index
Page 7:	30-yr Bonds, 10-yr Notes
Page 8:	Crude Oil, Natural Gas
Page 9:	Heating Oil, Gold
Page 10:	Silver, Copper
Page 11:	Corn, Wheat
Page 12:	Soybeans, Soybean Oil
Page 13:	Soybean Meal, Lean Hogs
Page 14:	Live Cattle
Page 15:	Core Methodology
Page 16:	Disclaimer

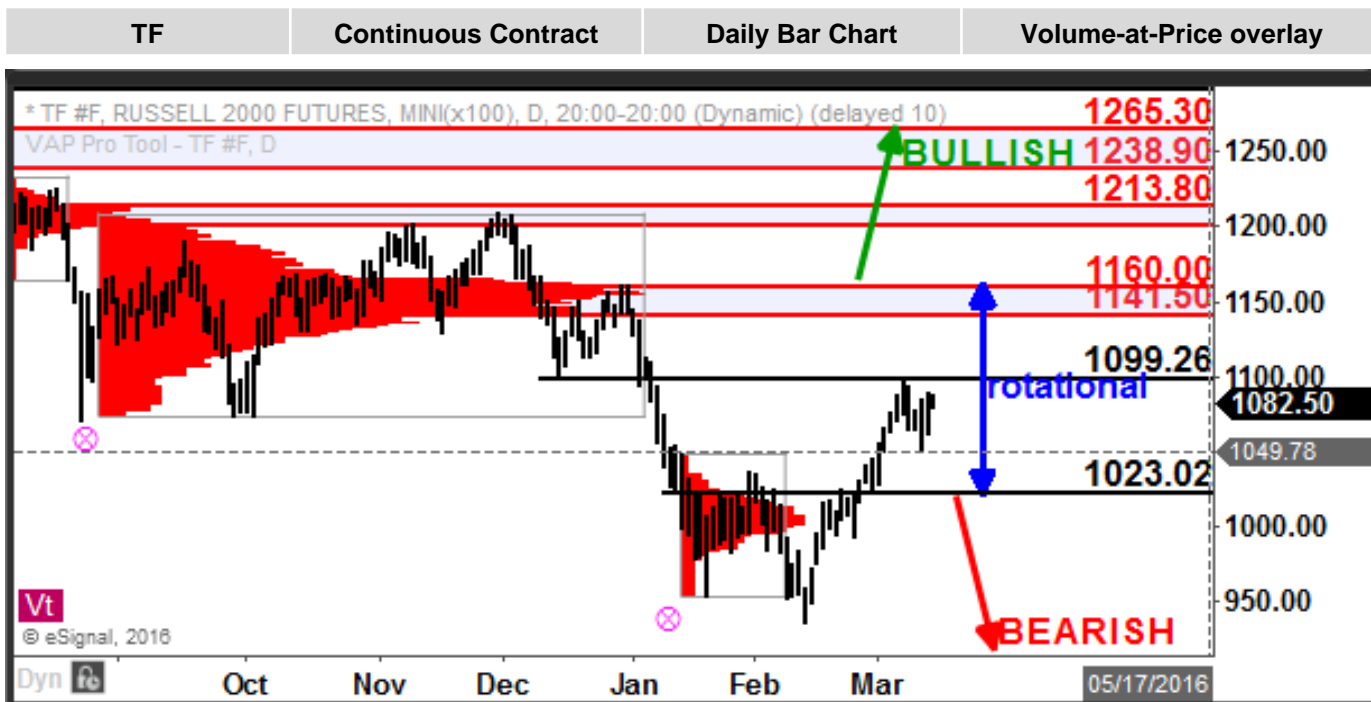
S&P 500 E-mini We favor a continuation higher above support at 1973-95 targeting 2032/2088 next..



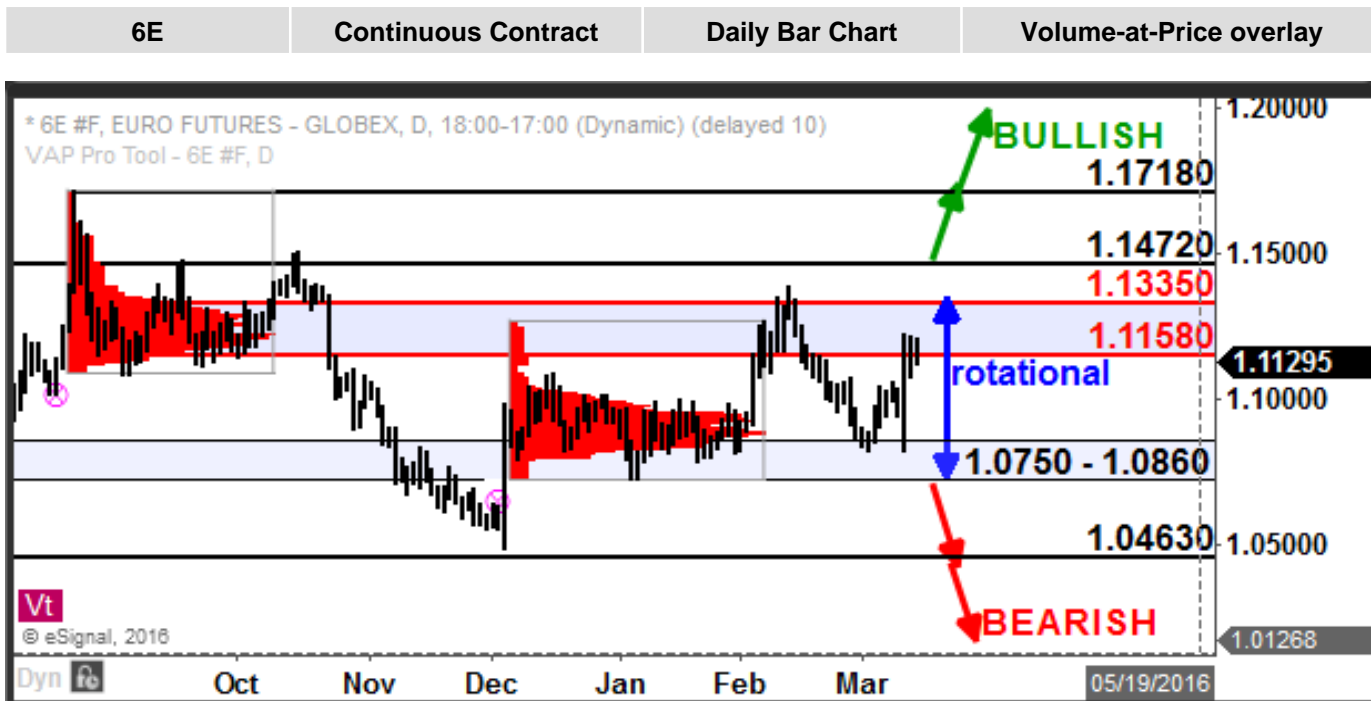
Nasdaq-100 E-mini We favor a further extension higher above 4331 targeting 4512-81. Support is 4281.



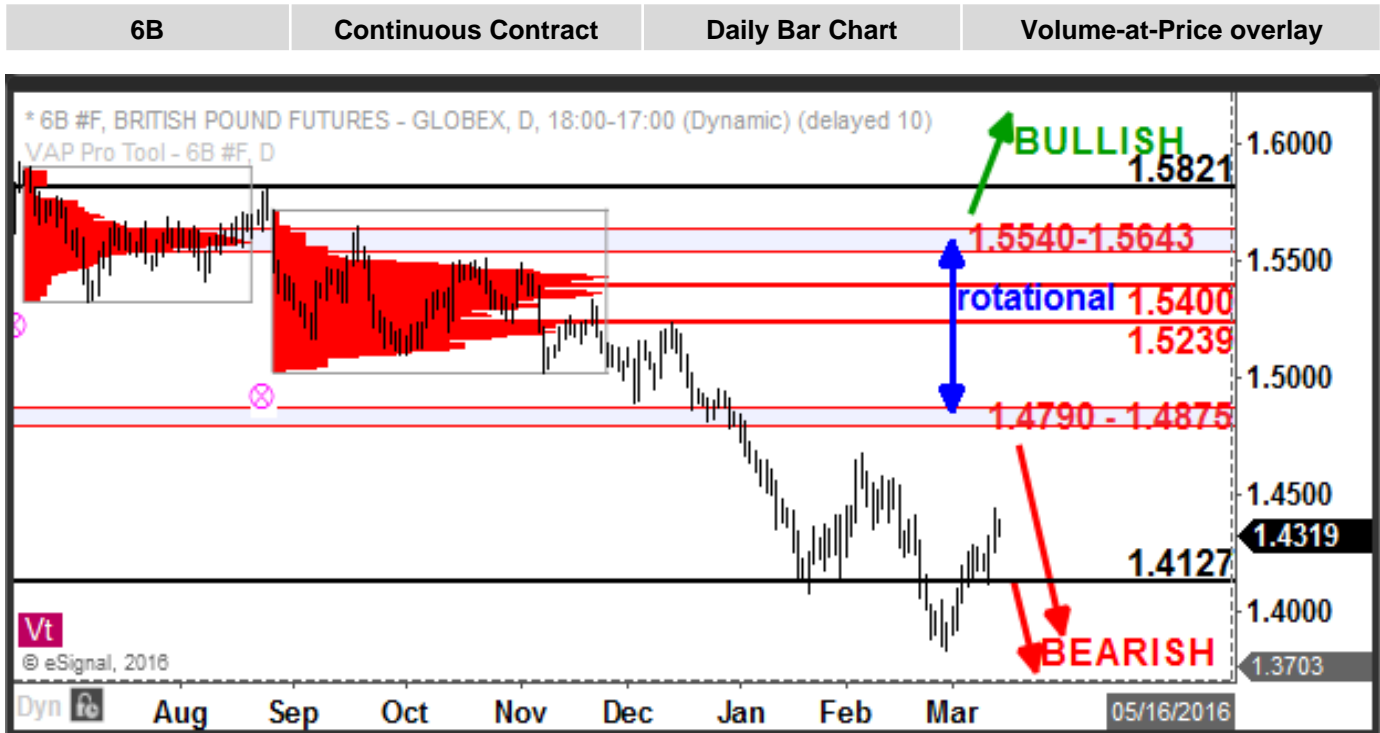
Russell 2000 Mini We would expect further bullish action above 1099 targeting 1141-60. Support is 1049/1023.



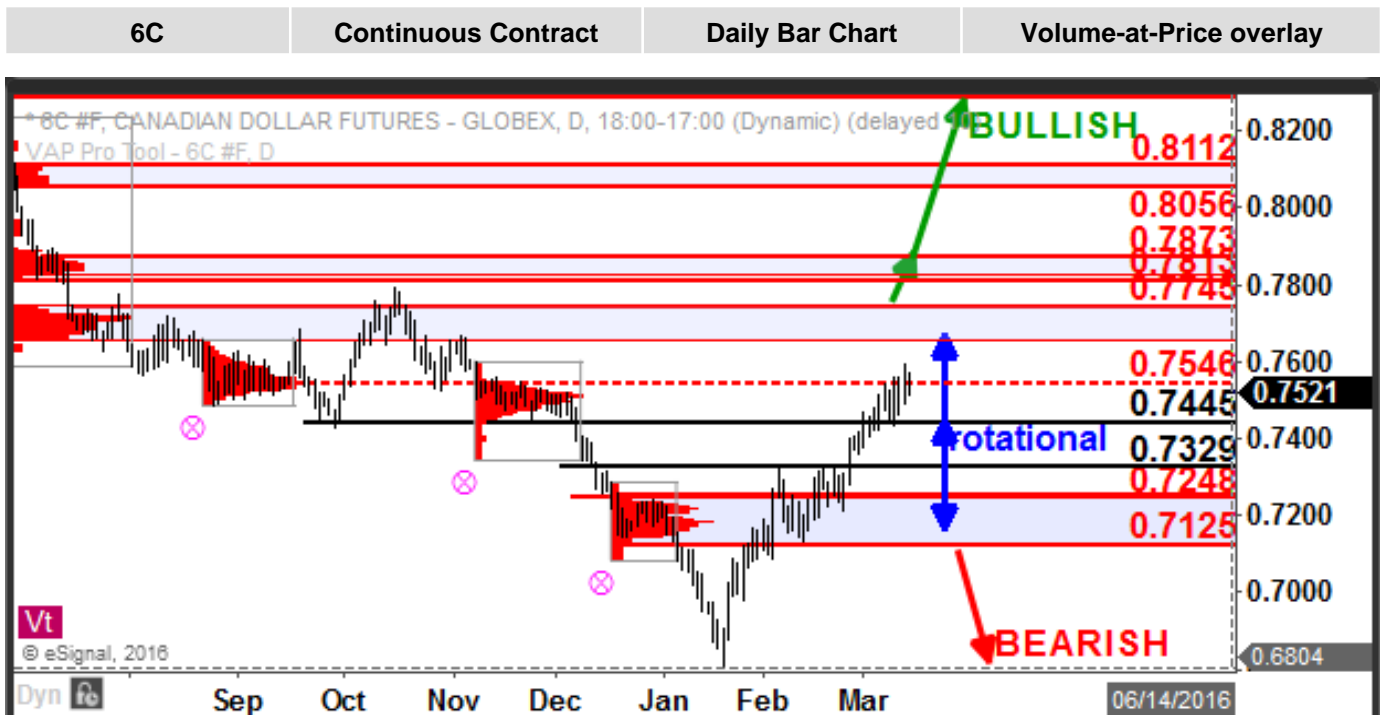
Euro FX has bounced off support at 1.0750-1.0860. We will now look for rotational action between 1.0750 and 1.1335. Short term players may continue to scalp rotational extremes.



British Pound We favor continued weakness below 1.4127 but look for a bounce if price establishes itself above 1.4127 targeting 1.4790-1.4875..



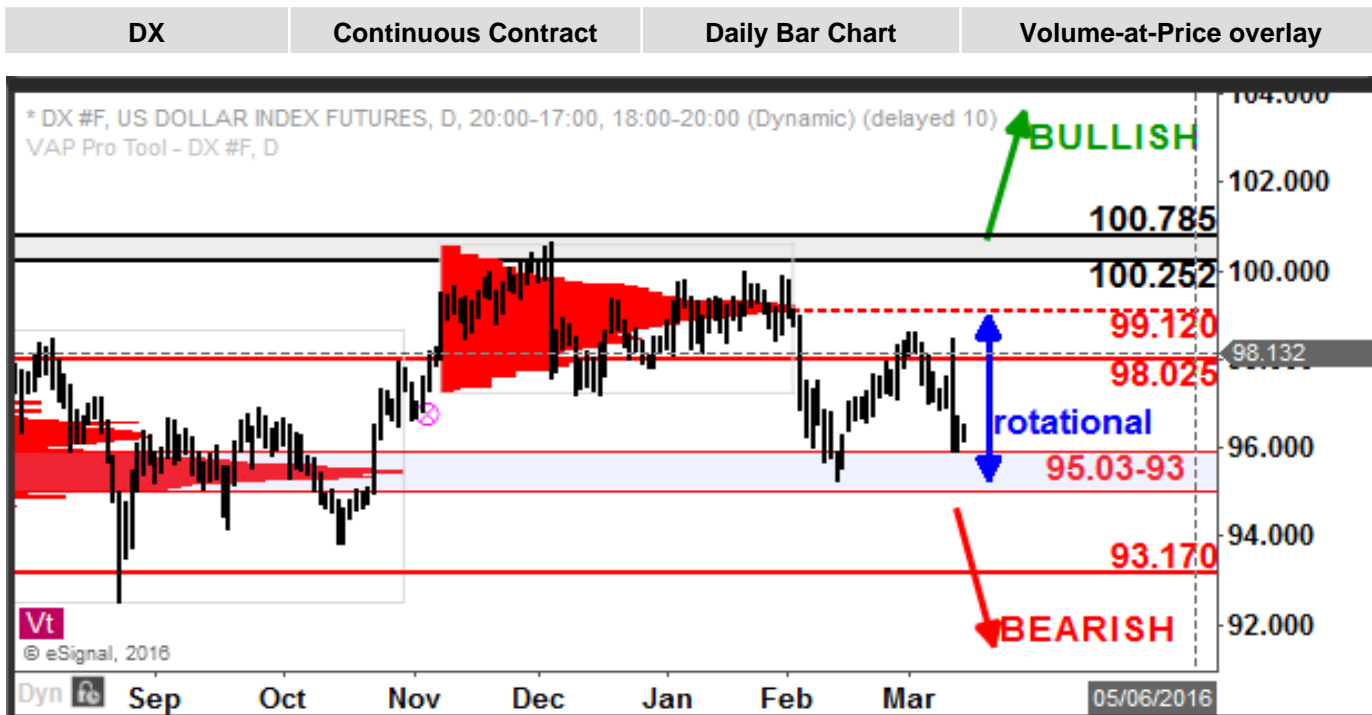
Canadian Dollar has finally bounced and we favor a continuation higher now that .7125 has held as support. Longs should of taken profits on longs from the .7150-.7200 range as targets at .7445(hit) / .7546(hit).



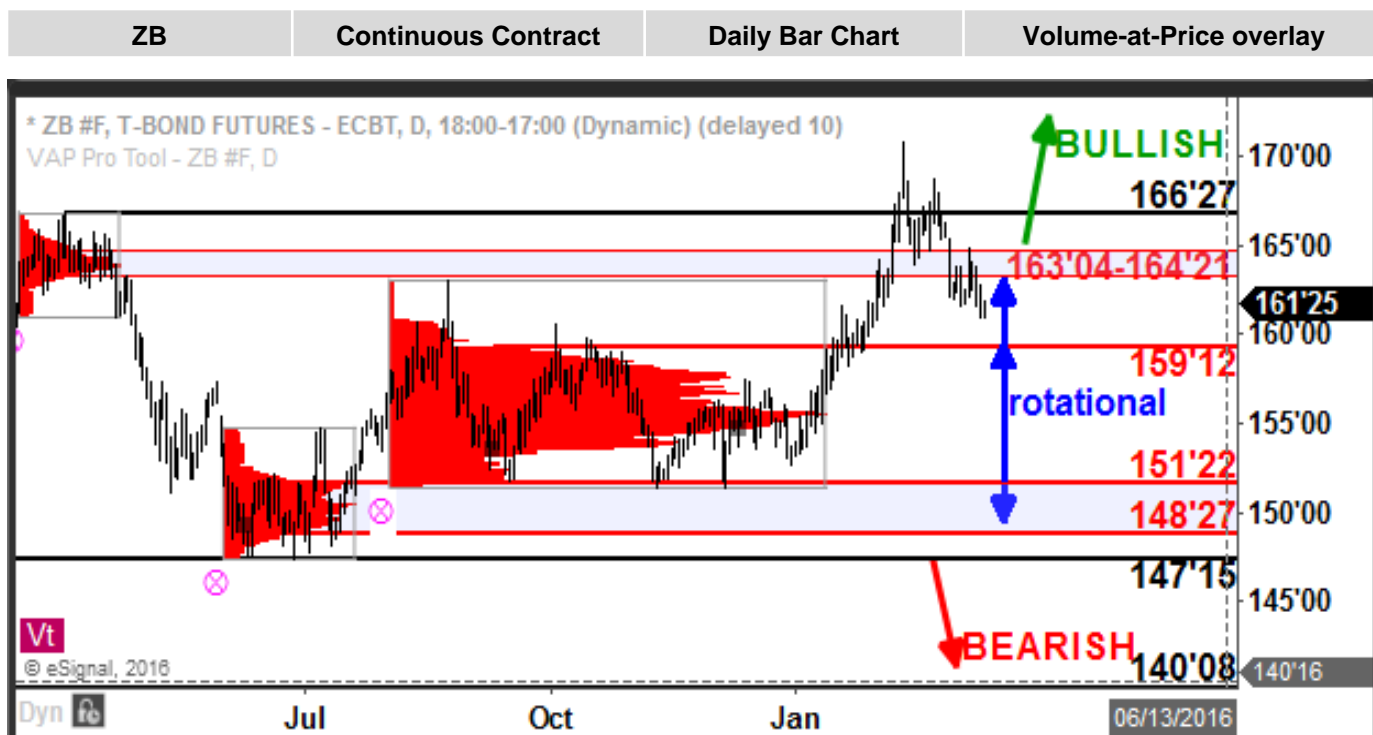
Japanese Yen has been consolidating after exploding above the .8663 level which now shifts higher as support. We favor further bullish action while above this level targeting .9226.



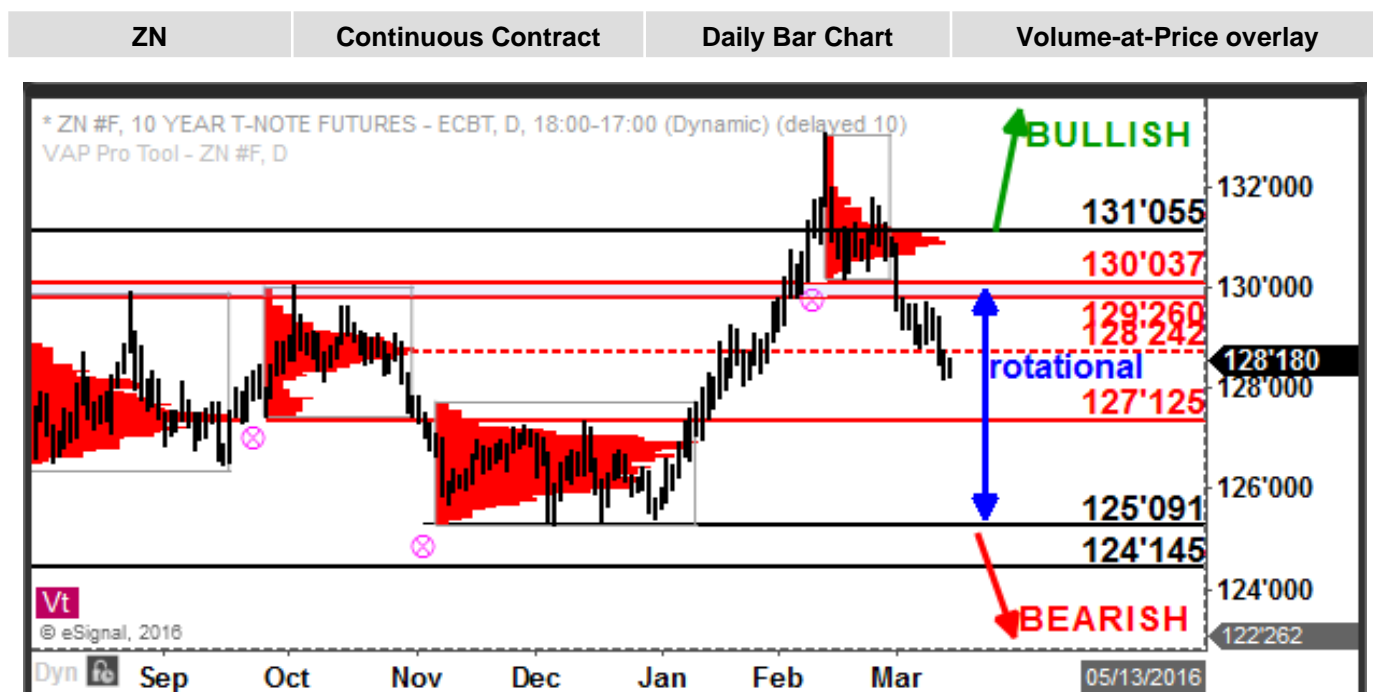
US Dollar Index has broken support, now resistance at 98.025 which has led to a pullback into support at 95.03-93 where we have seen a bounce as expected. The US Dollar is now rotational after ailing to extend above the 100 level.



30-yr Bonds has broken support at 163'04-164'21 which now shifts lower as resistance. We favor further bearish action while above this level and would consider shorts here targeting 159'12 then 155'16.



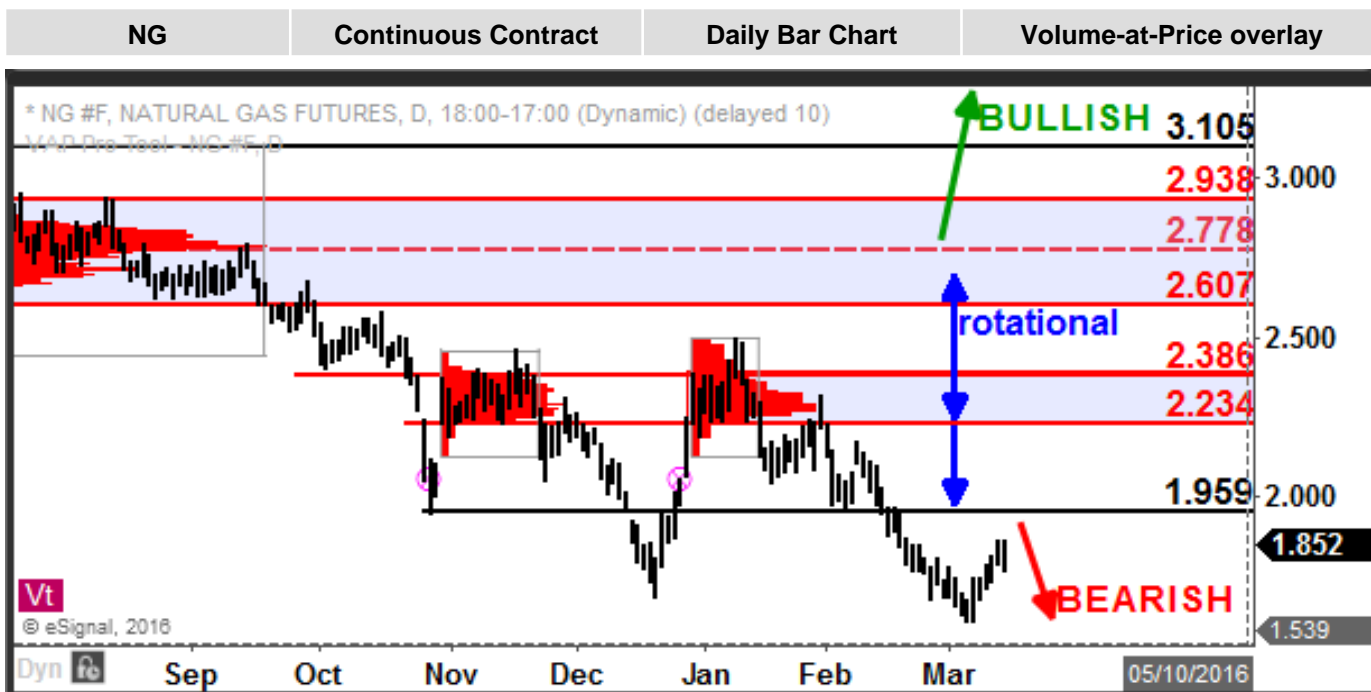
10-yr Notes has broken support at 129'260-130'037. We favor a further pullback while below this level targeting 127'125/126'160. Shorts are open up against resistance at 129'260.



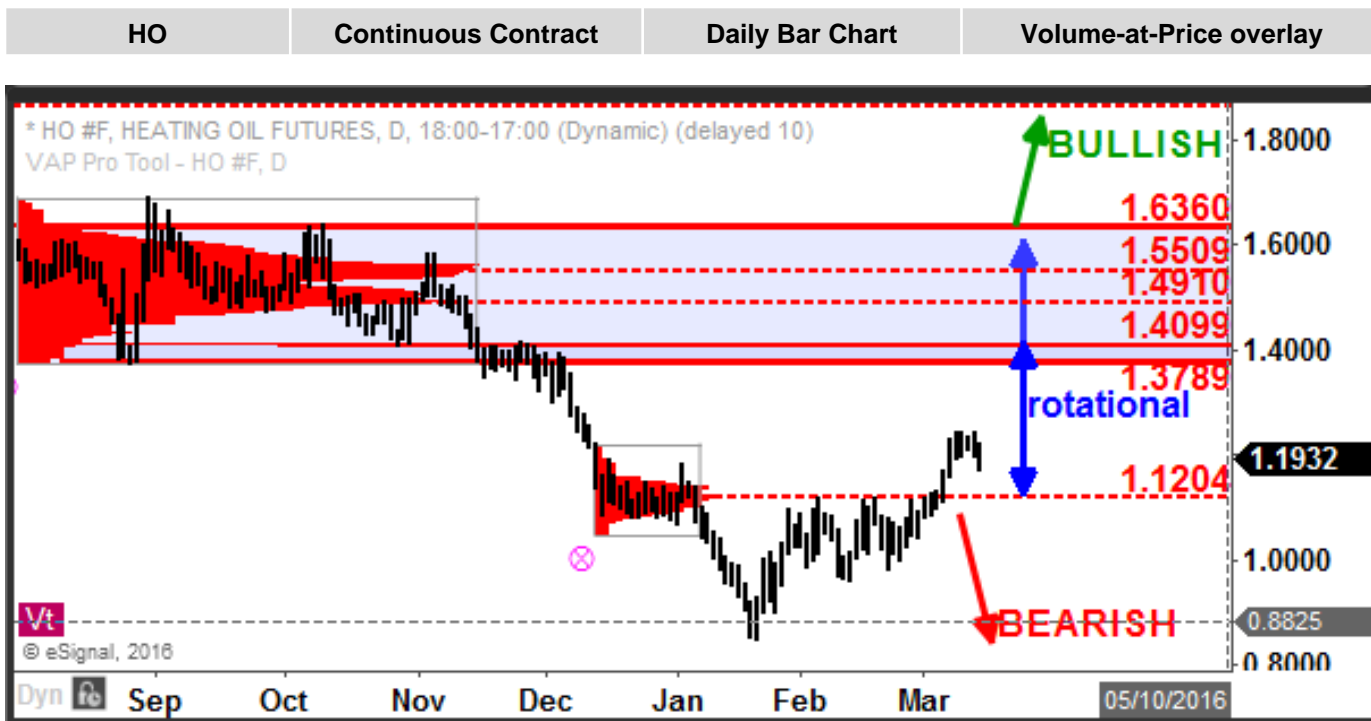
Crude Oil has rallied after making a near-term double bottom at 25.87 as price trades into the 35.92-38.54 area where we can expect an initial pause or rejection. Shorts are now open in the 37.25-38.50 area.



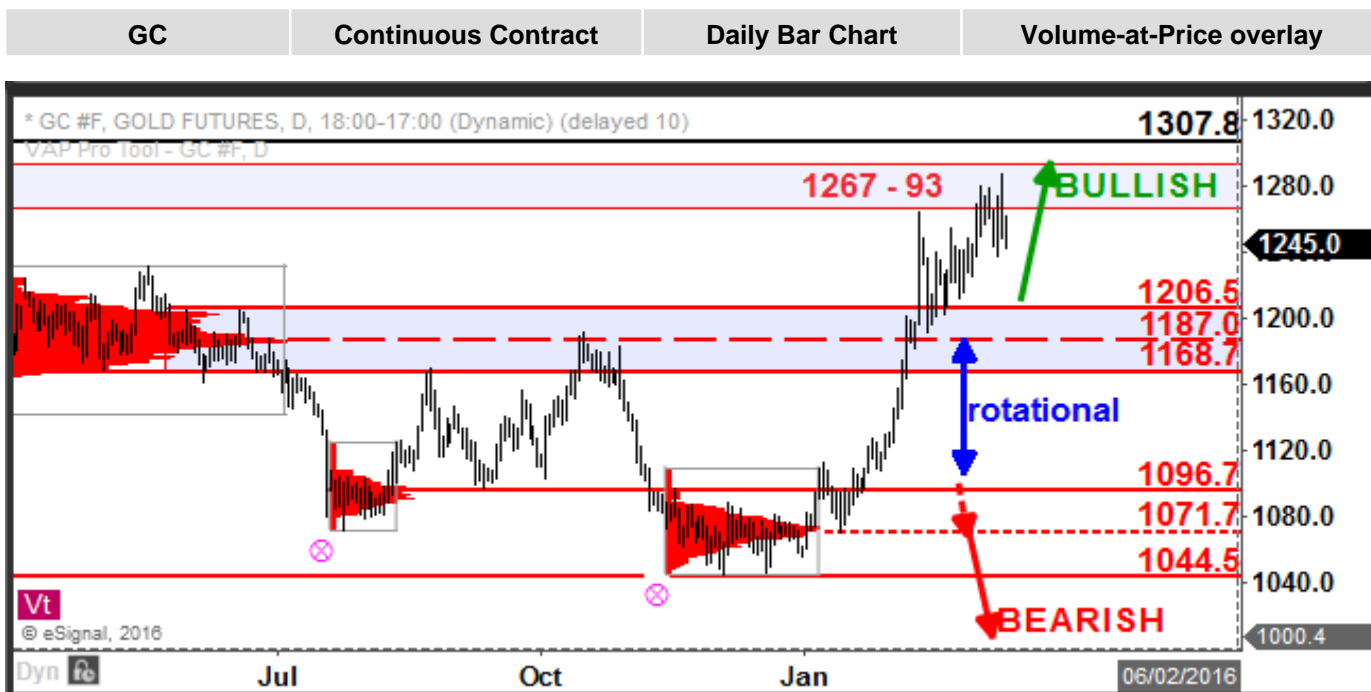
Natural Gas We favor further bearish action while below 1.959 as price is testing recent Dec. lows. Shorts have now reloaded in the 2.115-2.234 range and can take profits here and go flat after taking some profits at 1.800.



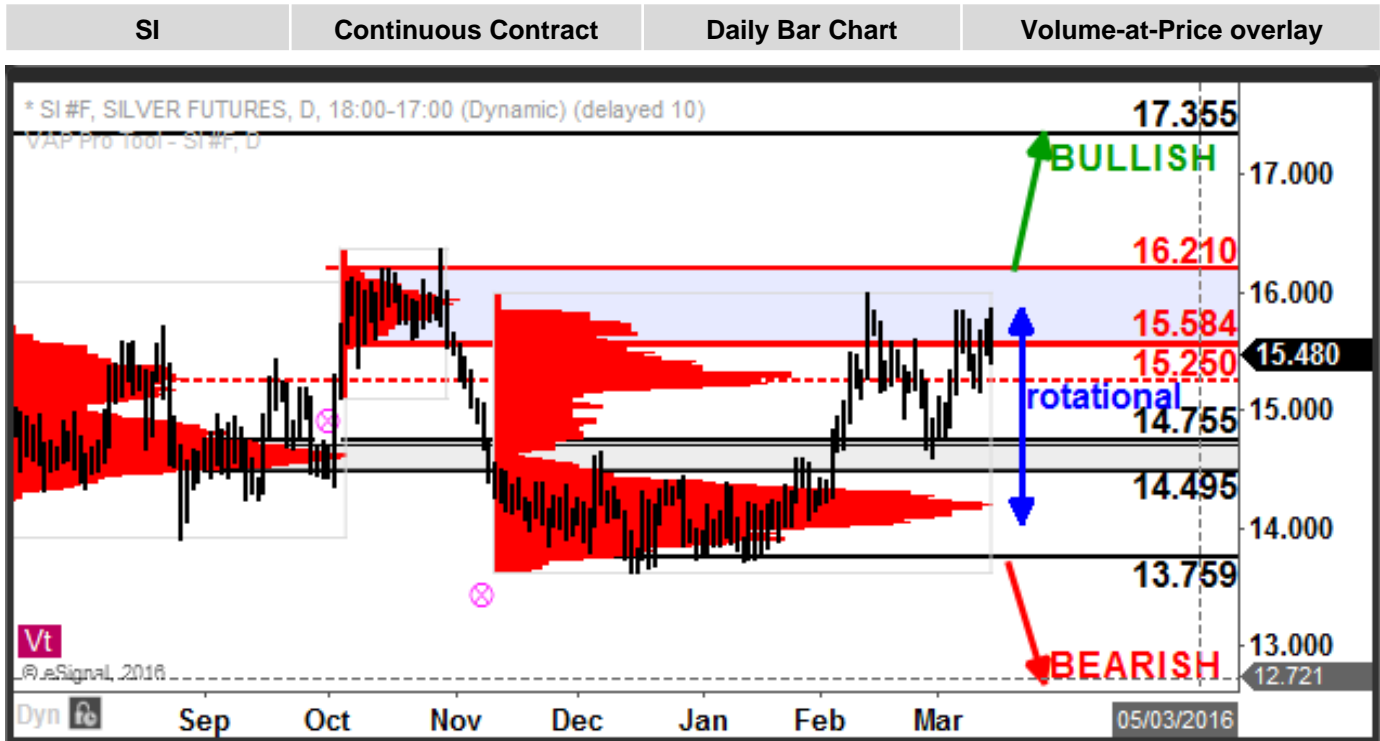
Heating Oil has finally bounced after falling off a cliff after breaching 1.3789. We favor a further bounce while above near-term support at 1.1204 which targets 1.3789. Longs may be considered here on dips protecting 1.1000.



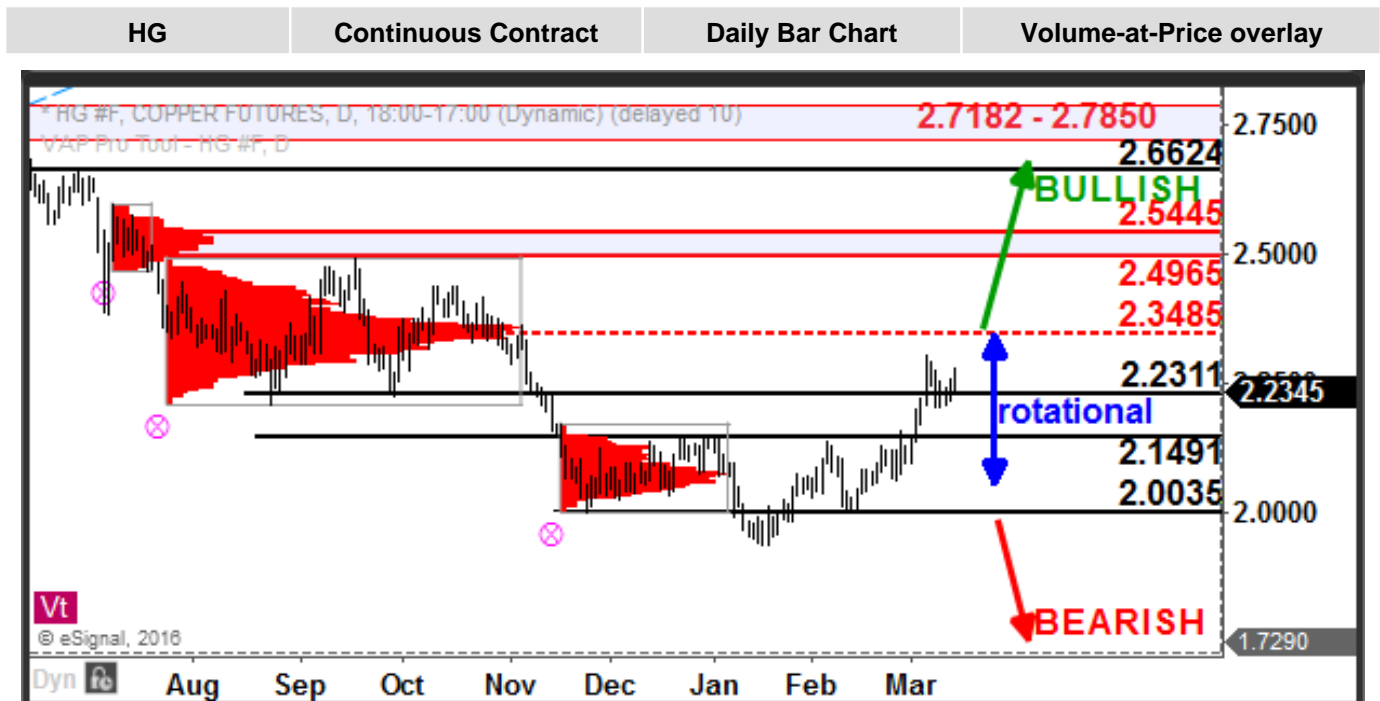
Gold The 1187-1206 area now shifts higher as support and we favor further bullish action while above this level with resistance between 1267 and 1293 where we have seen a few rejections..



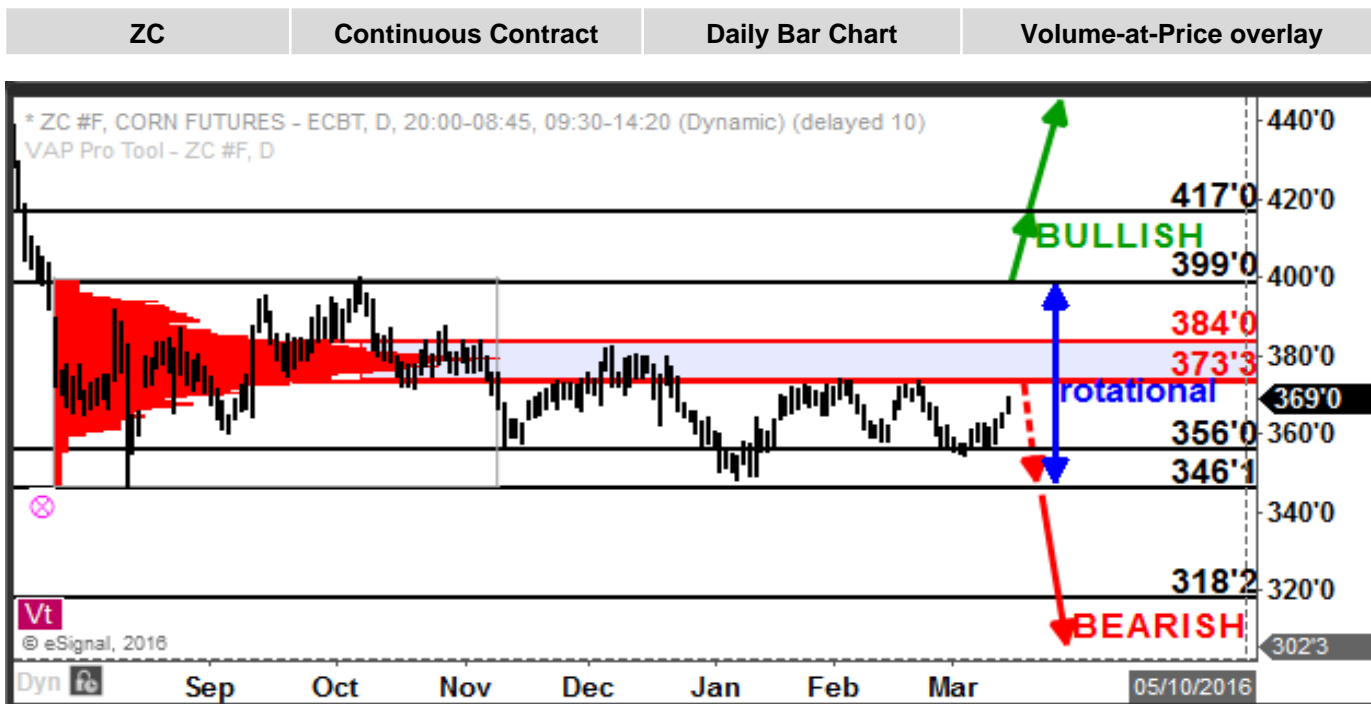
Silver Continues to act rotational between 14.49 and 15.58-16.21. Above 16.21 would favor an extension higher into 17.35. Any shorts scalps up against 15.58-16.21 zone should be flat, taking profits at 15.25/14.75. Any longs from 14.75 can take profits as well.



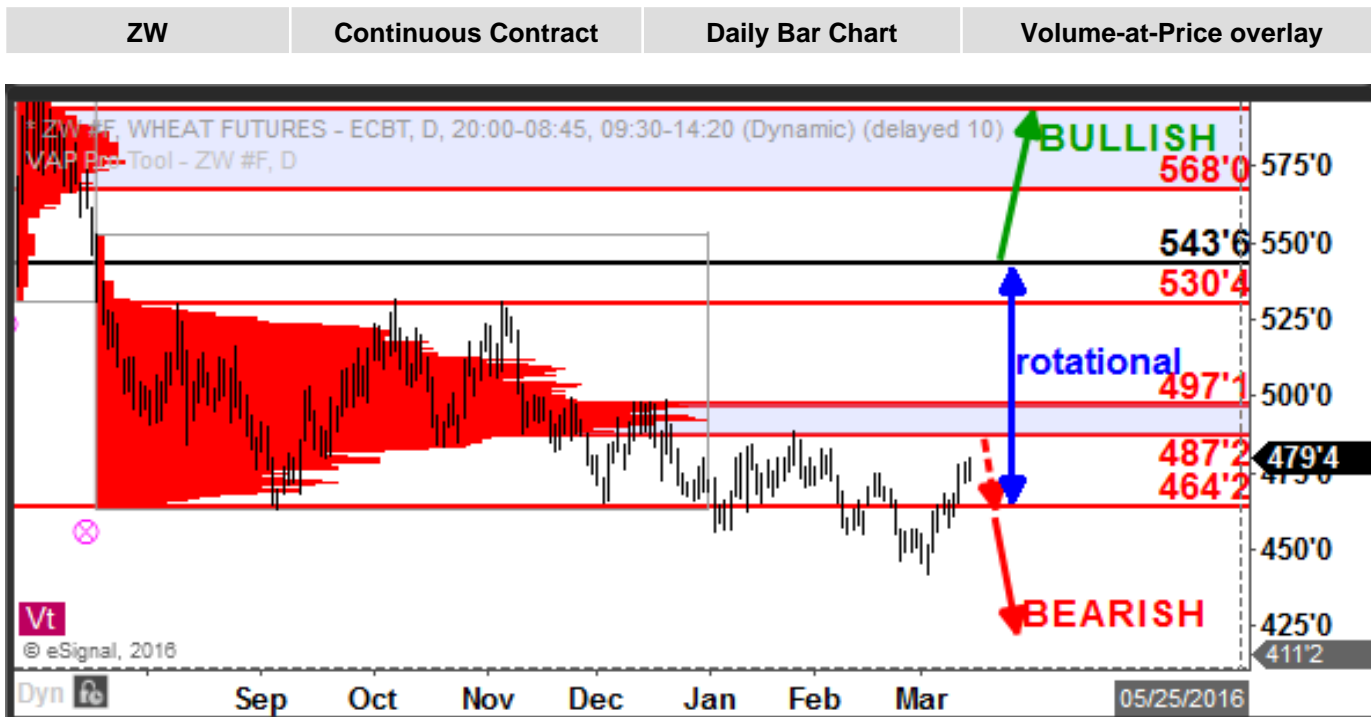
Copper has moved back above 2.0035 which has held as support, leading to a bounce into 2.2311 targeting 2.34 next.



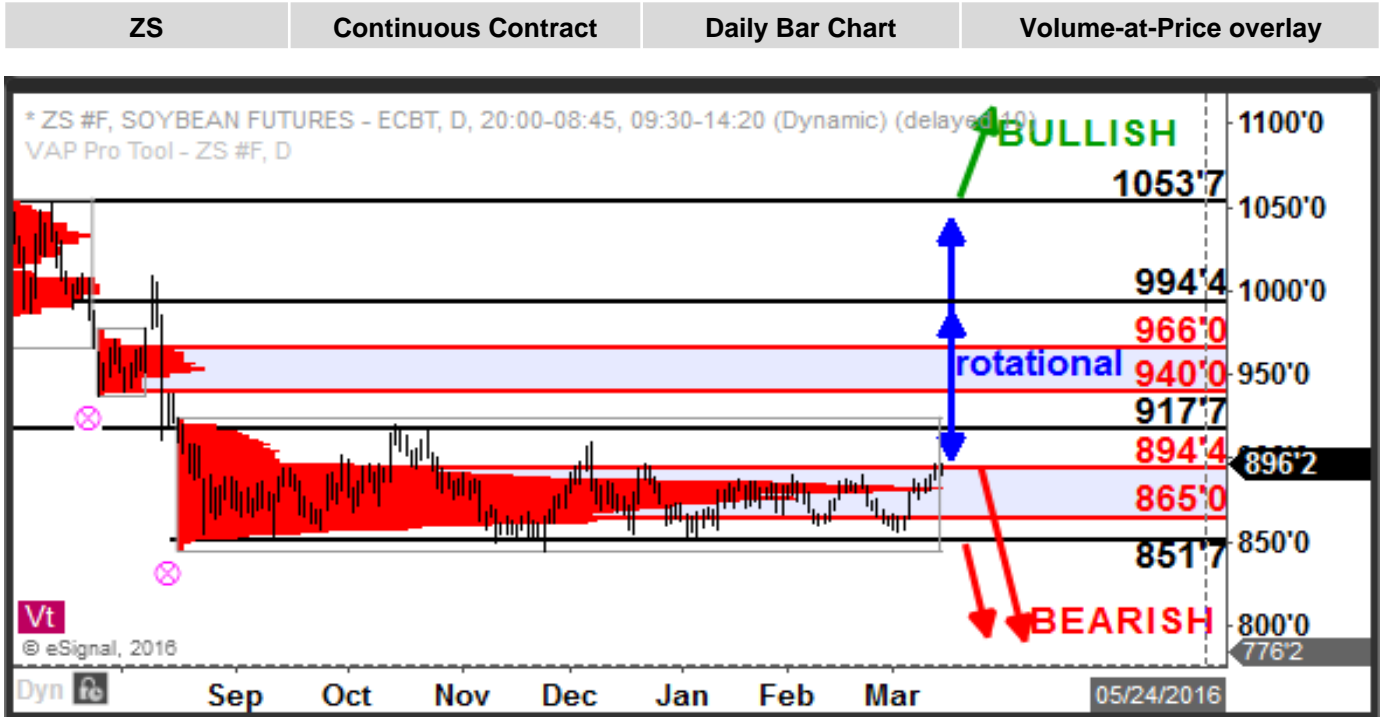
Corn is rotational with support at 346'0/356'0 and resistance at 399'0. The bias is for continued rotational action with a breach of this zone needed to determine the next directional move.



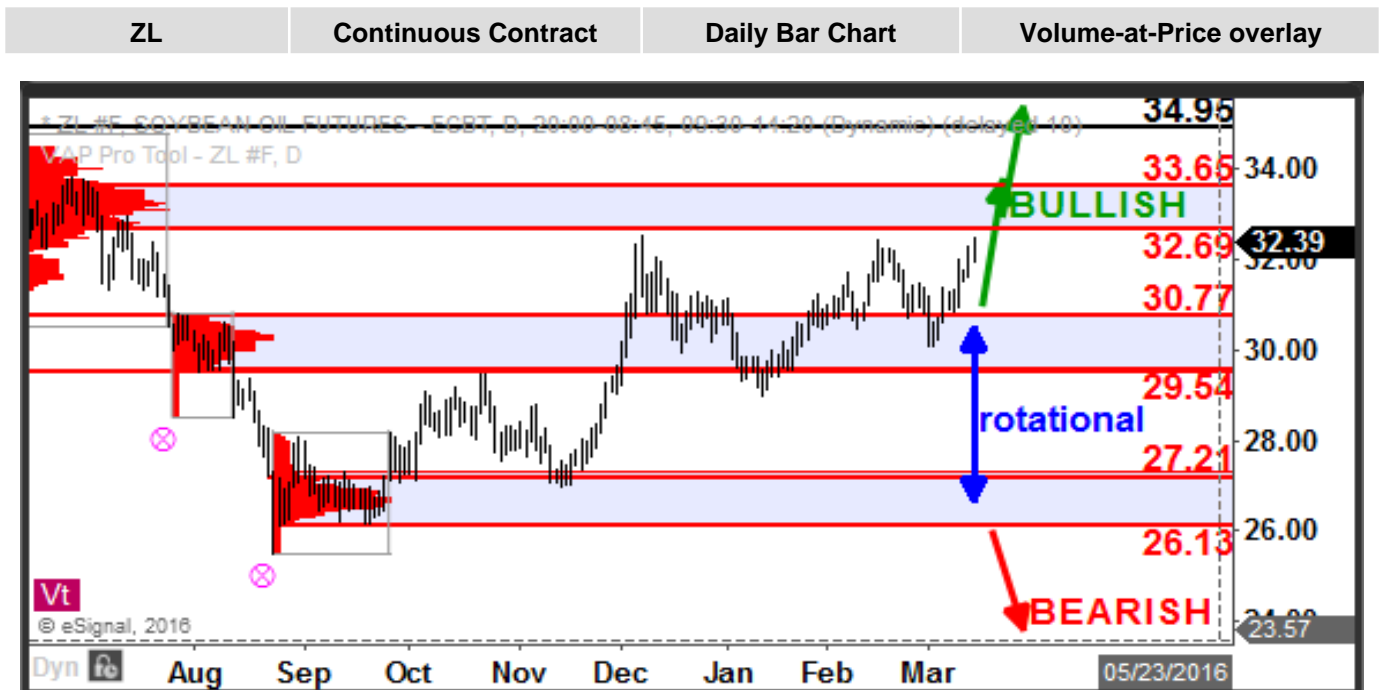
Wheat remains bearish below 487 with support at 464'2 as price continue to just drift lower.



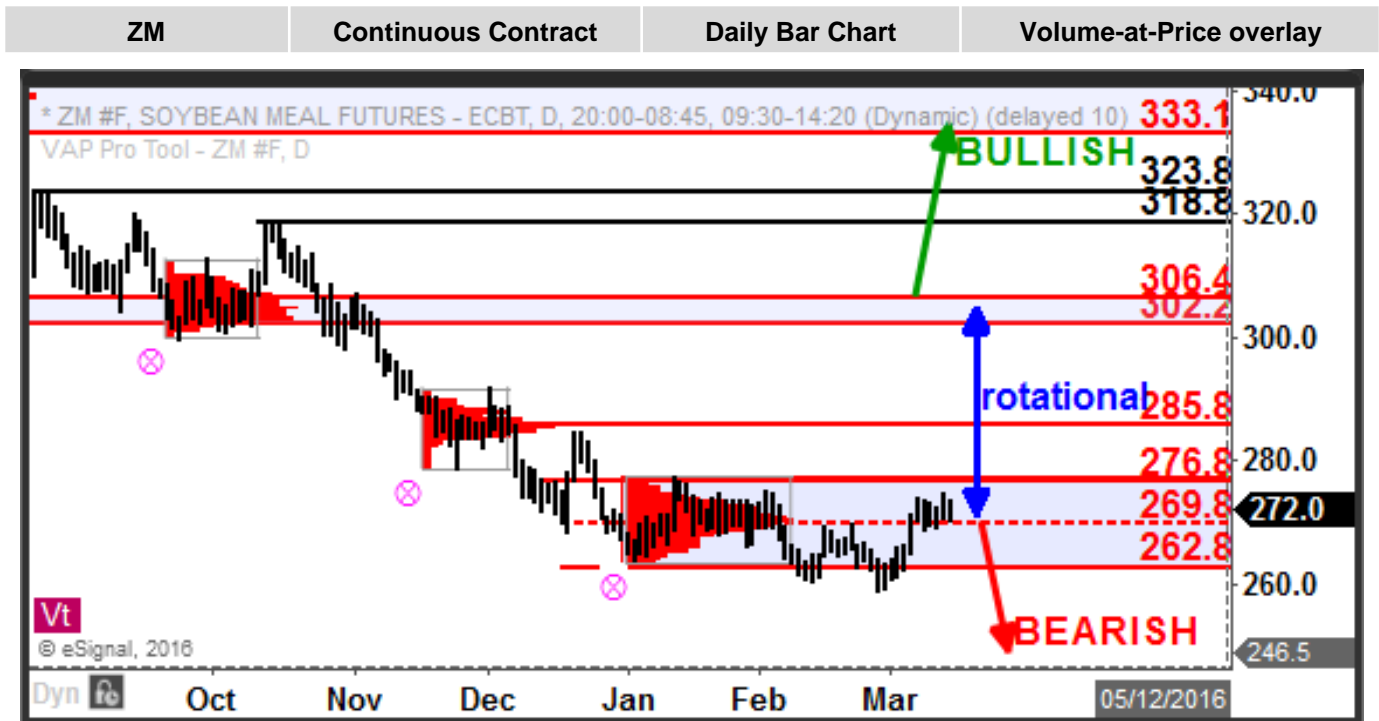
Soybeans remains overall bearish below 917'7 while it consolidates between 851'7 and 917'7. Below 851'7 would open the door for another strong leg lower.



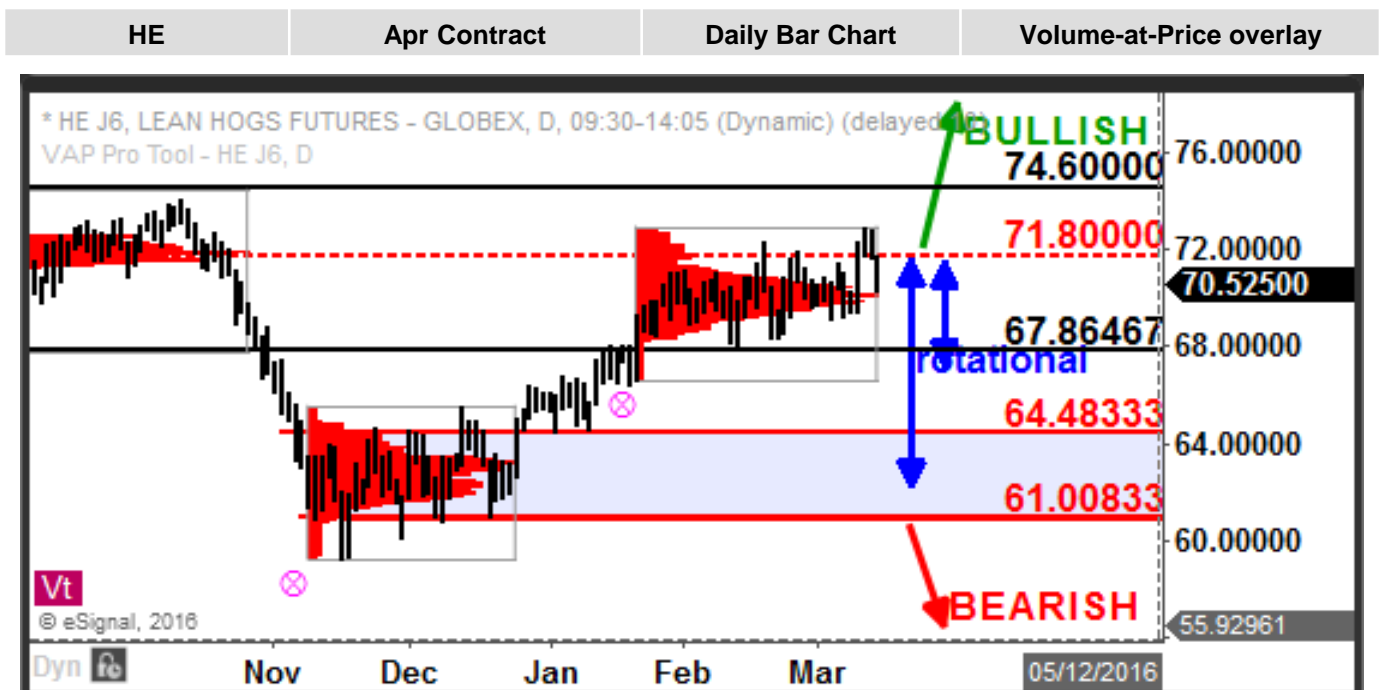
Soybean Oil has pivoted off support at 30.77. We continue to favor bullish action while above this level targeting 32.69-33.65.



Soybean Meal We now favor rotational action between 262 and 276 as price finds a bottom. Below 262 would favor an extension of the bearish trend. Above 276 would target 285 and higher.



Lean Hogs has broken above 67.86 and has traded into 71.80 before pulling back. Price is now consolidating between these levels. A breach of 71.80 targets 74.60. below 67.86 targets 61.00-64.48.



Live Cattle has broken its wedge to the upside which now targets 141(hit)-144 in extension. Traders have entered longs up against 136 and have taken some profits up against 141 protecting 138 on rest.



Core Methodology

In performing our analyses and making trading decisions, Lakefront Futures & Options, LLC utilizes volume-at-price information and the concepts of Auction Market Theory. Volume-at-price is a valuable tool similar in some ways to Market Profile, which utilizes time-at-price. Volume-at-price is displayed as a histogram along the price (vertical) scale and builds across the chart as traded volume occurs at each price. This view is sometimes referred to as a volume profile or VAP (volume-at-price) profile.

Volume-at-price analysis provides valuable information about what prices have seen the heaviest institutional interest and can give insight into where the smart money is accumulating and distributing. While traditional indicators are often simply derivations of price information, volume-at-price provides unique additional information that is not available to traders only using traditional technical analysis methods.

By applying volume profiles to specific areas of the chart, information can be drawn out of the price action identifying areas of support and resistance as well as trend information. We refer to the areas of heaviest volume within the volume profile histogram as high-volume areas, or HVA's. The location of HVA's and the price action around them are determinants in forming trade setups and determining expectations and the probabilities of subsequent price action.

Volume-at-price analysis is applicable and useful at all degrees of scale, from weekly charts to 1-minute charts and everything in between. Performing this type of analysis in multiple timeframes allows us to integrate the broad view of what the market is doing with the immediate movements at a more granular level. This allows us to take positions that not only have favorable odds of success but that also have very favorable risk/reward metrics.

In performing our analyses for our published reports as well as for our trading calls, we focus only on opportunities that have a minimum expected reward/risk ratio of 2-to-1 or better.

Disclaimer

This publication does not constitute and should not be construed as an offer or the solicitation of any transaction to buy or sell any securities or any instruments or any derivatives of the securities mentioned herein or to participate in any particular trading strategies. Although the information contained herein has been obtained from recognized services, and sources believed to be reliable, its accuracy or completeness cannot be guaranteed. Opinions, estimates or projections expressed in this report may make assumptions regarding economic, industry and political considerations and constitute current opinions, at the time of issuance, which are subject to change without notice. The products or securities mentioned in this report may not be eligible for sale in some states or countries. Their value and any income which they may produce may fluctuate and / or be adversely affected by interest rates, exchange rates and other factors.

This information is being furnished to you for informational purposes only, and on the condition that it will not form a primary basis for any investment decision. Any recommendation contained in this report is not intended to be, nor should it be construed or inferred to be, investment advice, as such investments may not be suitable for all investors. When preparing this report, no consideration to one's investment objectives, risk tolerance or other individual factors was given; as such, as with all investments, purchase or sale of any securities mentioned herein may not be suitable for all investors. By virtue of this publication, neither the Firm nor any of its employees shall be responsible for any investment decisions.

Before committing funds to ANY investment, an investor should seek professional advice. Any information relating to the tax status of financial instruments discussed herein is not intended to provide tax advice, or to be used by anyone to provide tax advice. Investors are urged to consult an independent tax professional for advice concerning their particular circumstances. Past performance should not be taken as an indication or guarantee of future performance, and no representation or warranty, either expressed or implied, is made regarding future performance.

The authors of this report may, from time to time, have long or short positions in, and buy or sell the securities or derivatives (including options) of the companies mentioned herein. Additional information relative to securities, other financial products, or issuers discussed in this report is available upon request.

Please keep in mind that futures trading involves substantial risk of loss and is not suitable for every investor.