



# US Futures Daily Report

Wednesday, March 23<sup>rd</sup>, 2016

## PIVOT POINTS

Contract	2 <sup>nd</sup> Support	1 <sup>st</sup> Support	Neutral Pivot Zone	1 <sup>st</sup> Resistance	2 <sup>nd</sup> Resistance
ES M6	2020.25	2030.50	2038.75-2040.75	2049.25	2057.75
NQ M6	4361.00	4395.00	4417.75-4429.00	4451.75	4474.50
TF M6	1077.3	1083.4	1089.4-1089.8	1095.8	1102.1
CL K6	40.12	40.59	41.07-41.25	41.72	42.38
GC J6	1228.7	1235.4	1242.0-1248.1	1254.8	1267.5
6E M6	1.1200	1.1220	1.1237-42	1.1261	1.1285
ZB M6	160'19	161'04	161'21-162'02	162'19	163'17
ZN M6	128'055	128'140	128'225-128'290	129'055	129'205

## Table of Contents

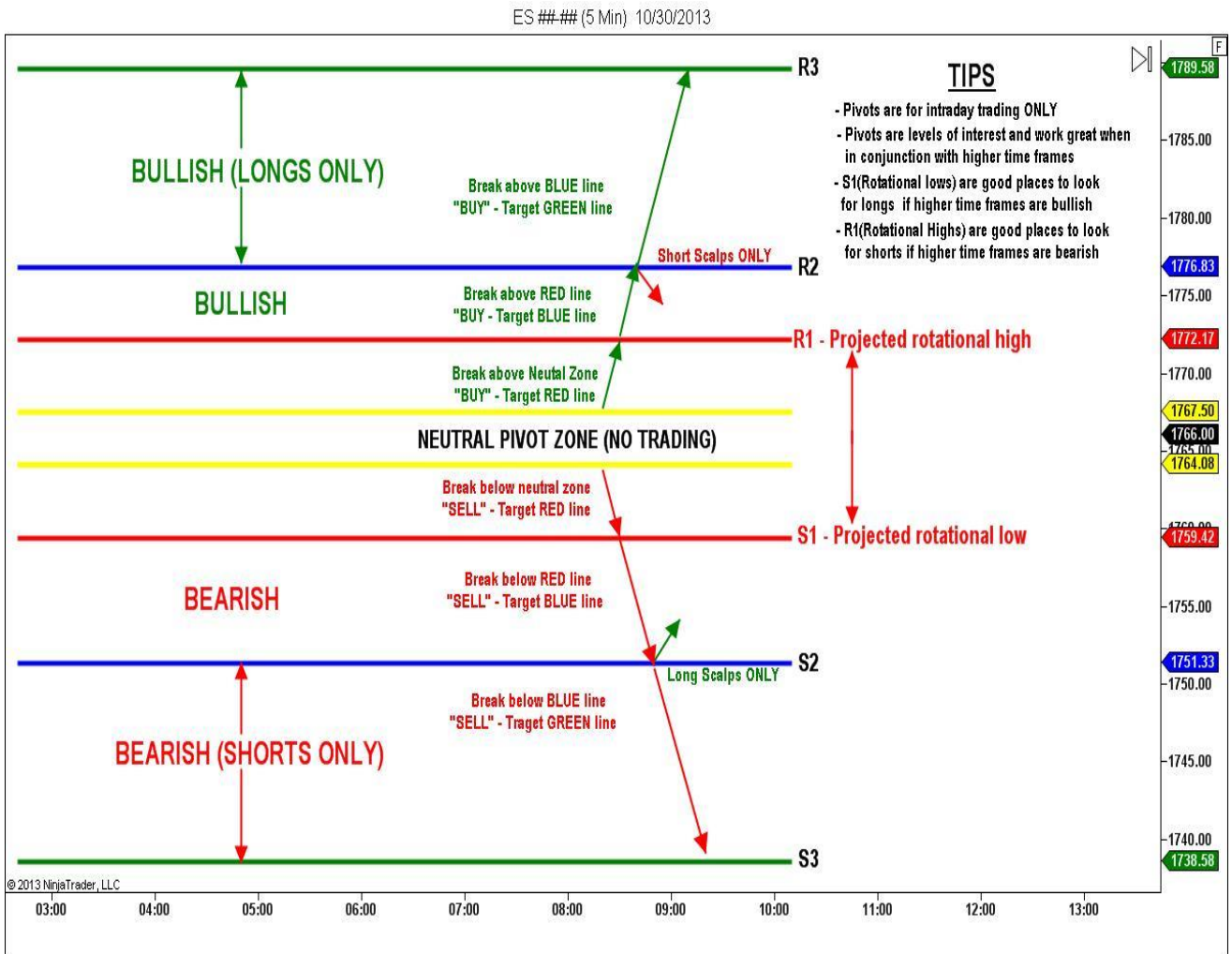
---

Page 1:	Pivot Points
Page 2:	Pivot Points Explained
Page 3:	E-mini S&P 500, E-mini Nasdaq-100
Page 4:	Mini Russell 2000, Crude Oil
Page 5:	Gold, Euro-FX
Page 6:	30-yr Bonds, 10-yr Notes
Page 7:	Core Methodology
Page 8:	Disclaimer

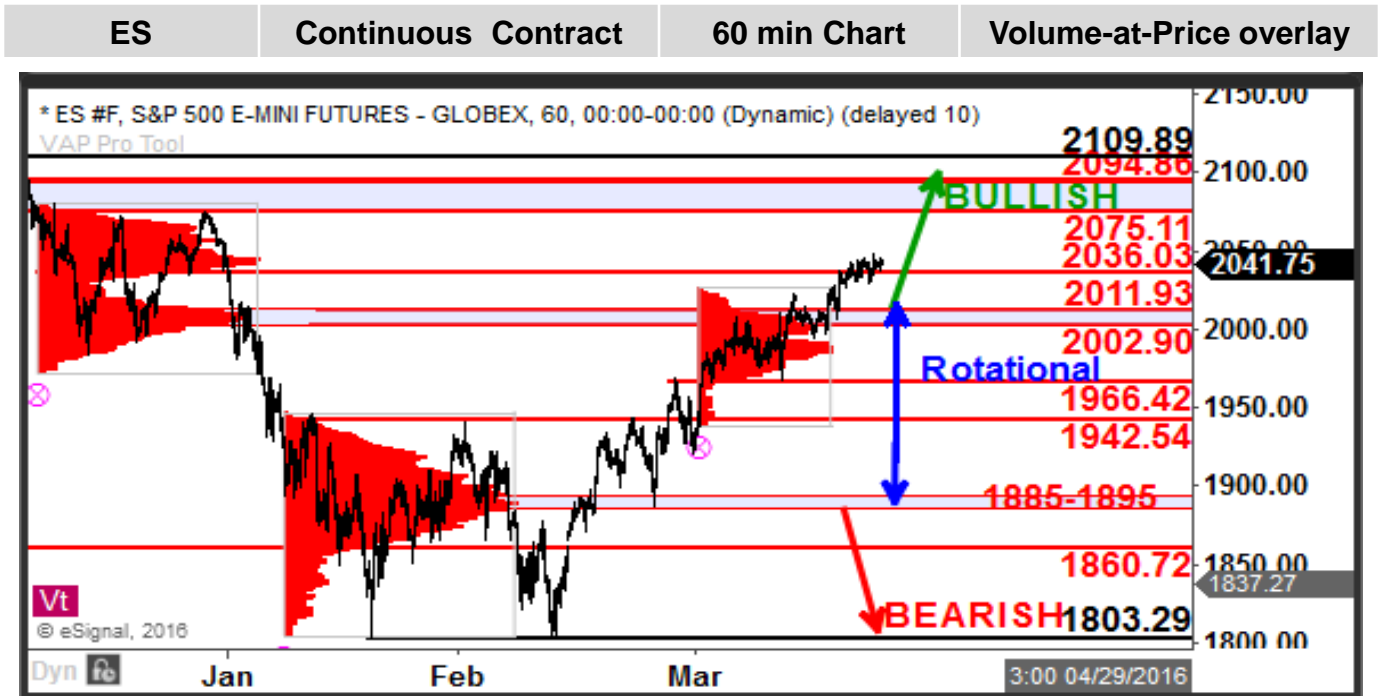
**Disclaimer:** This brief statement does not disclose all of the risks and other significant aspects of trading in futures and options. You should carefully consider whether trading is appropriate for you in light of your experience, objectives, financial resources and other relevant circumstances. Futures and options trading involve substantial risk of loss and are not suitable for everyone. This material should be construed as market commentary, merely observing economic, political and/or market condition, and not intended to refer to any particular trading strategy, promotional element or quality of service provided Lakefront Futures & Options, LLC. Lakefront Futures & Options, LLC is not responsible for any redistribution of this material by third parties, or any trading decisions taken by persons not intended to view this material. This material is owned by Lakefront Futures & Options, LLC and may not be redistributed. Please contact a Lakefront Futures & Options representative/broker for any specific trade advice.

# Pivot Points Explained

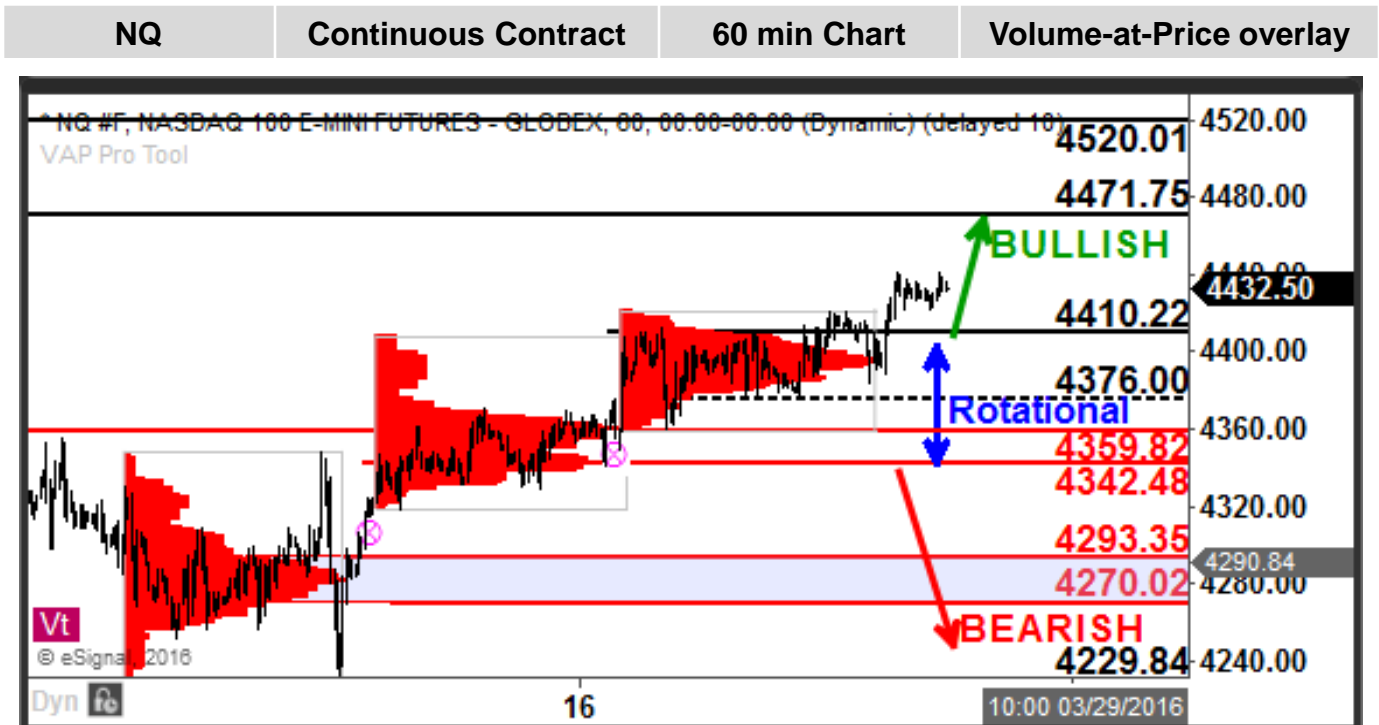
Pivot points are used by traders as a predictive indicator and denote levels of technical significance. When used in conjunction with other technical indicators such as support and resistance or Fibonacci, pivot points can be an effective trading tool. Pivot points are calculated using the high, low and close prices of a previous day, week or month. Three different levels of support and resistance are calculated above and below the pivot point. The three levels of resistance are referred to as R1, R2, and R3 while the three levels of support are referred to as S1, S2, and S3. When the current price is trading above the daily pivot point, this serves as an indication to initiate long positions. Conversely, when the current price is trading below the daily pivot point, this serves as an indication to initiate short positions. The support and resistance levels are used primarily as trade exits. For example, if the market price breaks above the pivot point, R1 and R2 may be used as trade targets. Should the market move to R3, traders may consider exiting the long position and even reversing the position if other technical indicators show a strong reversal trend.



**S&P 500 E-mini** We favor a continuation higher above 2036 targeting 2075-94. Below 2036 would favor a pullback into secondary support at 2002-2011. Secondary intraday support is 2032.



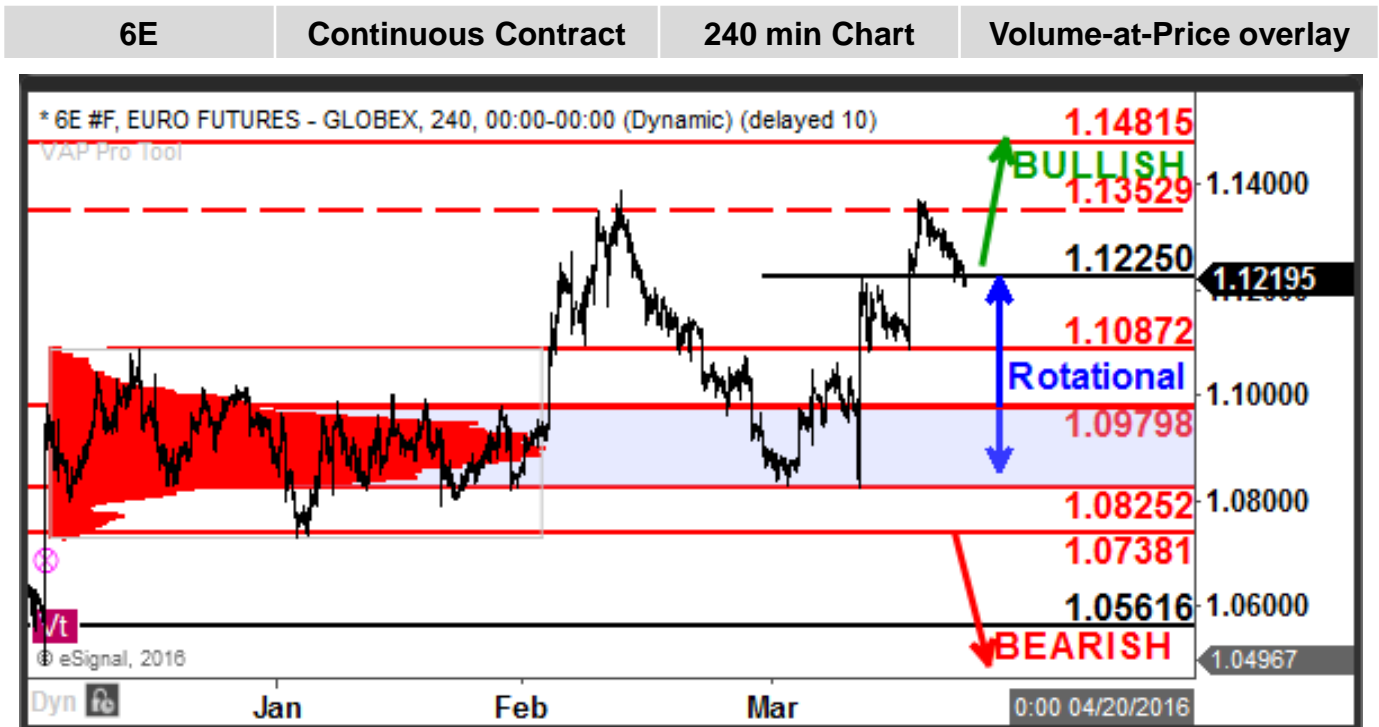
**Nasdaq-100 E-mini** We favor a further move higher above 4410 targeting 4471.



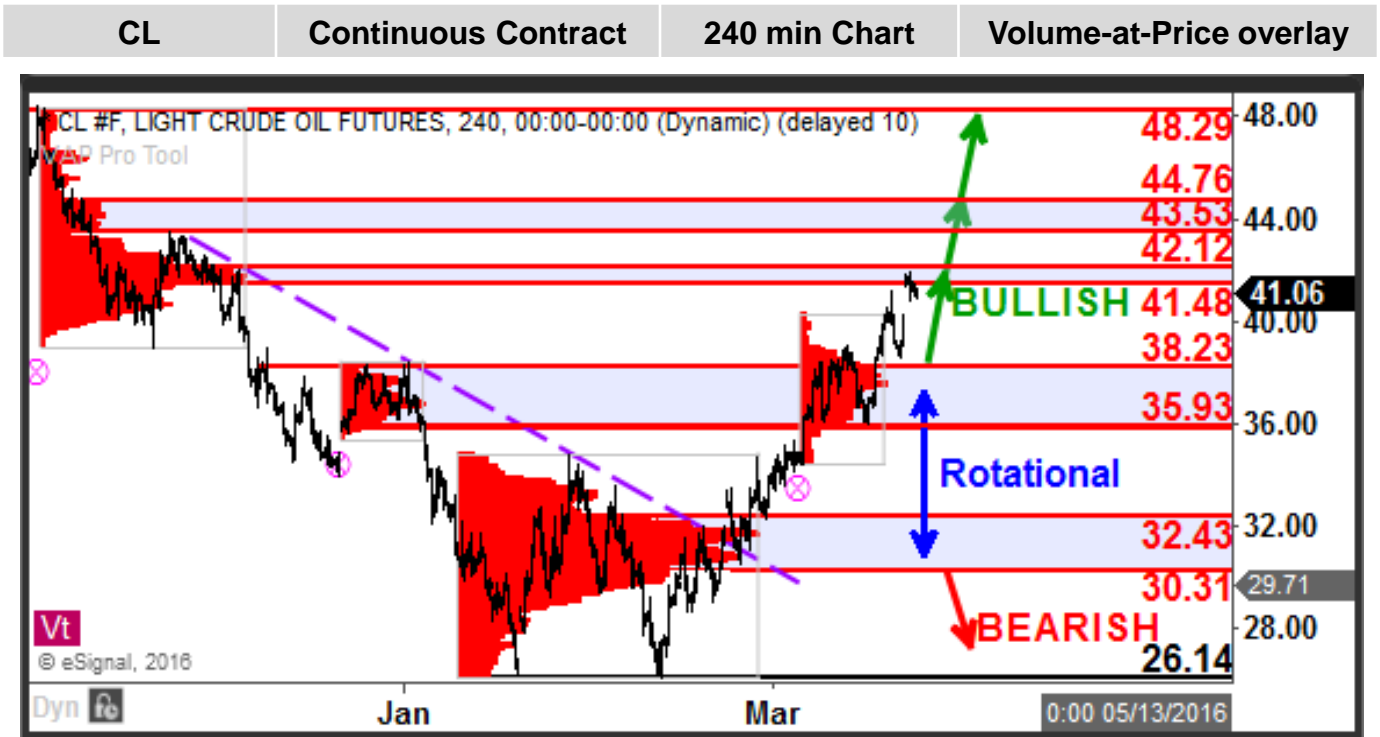
**Russell 2000 E-mini** We favor a further move higher above 1058 targeting 1095(hit)/1113/1125. Below 1058 would negate the bullish bias and favor lower prices.



**The Euro** has extended above the 1.1087 level and into 1.1352. Near-term support shifts higher to 1.1215. We favor continued bullish action while above this level.



**Crude Oil** is trading up against the 41.48-42.12 resistance zone as the front month contract moves to May with a slight premium to April. Near-term support shifts higher to 38.23 which has been defended. We favor further bullish action while above this level. We can expect the 41.48-44.76 area to be formidable resistance. Above 42.12 targets 43.53-44.76 next..



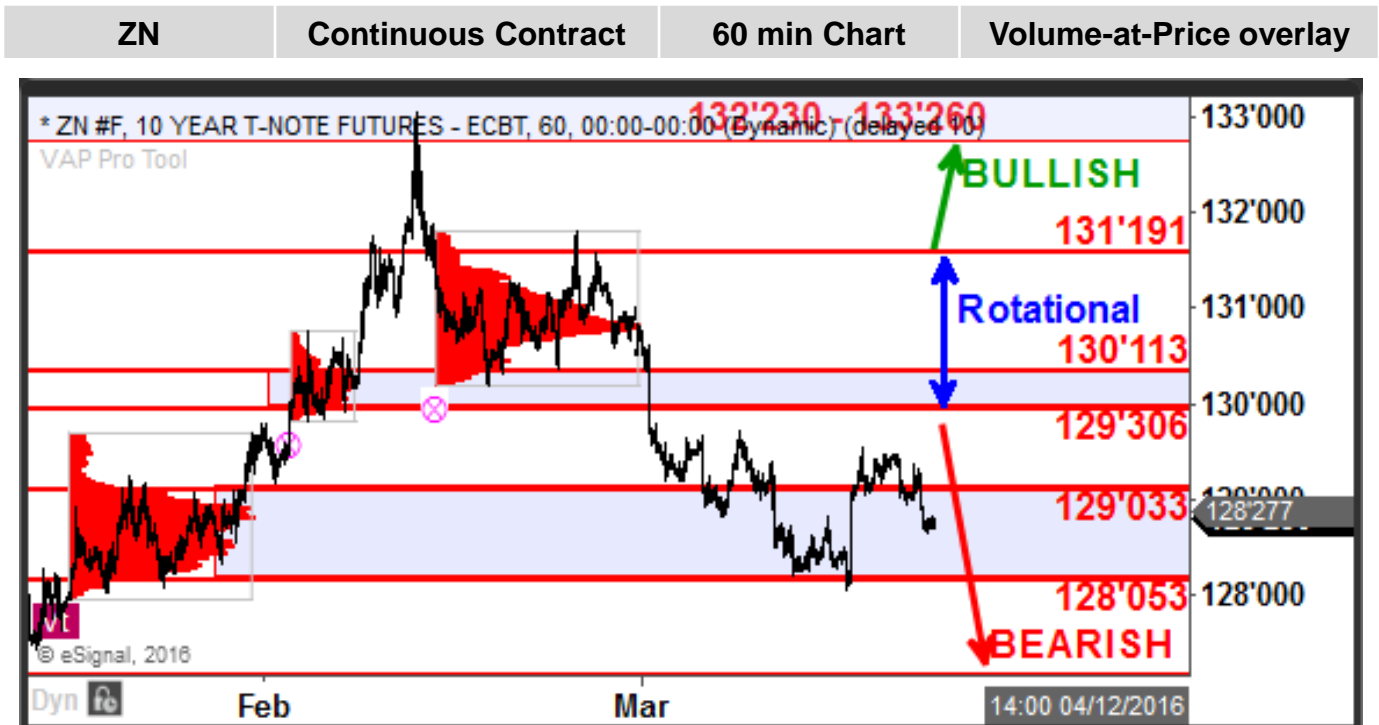
**Gold** continues to consolidate between 1226 and 1279. A breach of this move should determine the next directional move.



**30-yr Bonds** We favor near-term consolidation between 161'18 and 165'06 with a bearish bias for an eventual move lower.



**Ten-year Notes** have pulled back below 129'035 and remains overall bearish below 129'305.



# Core Methodology

In performing our analyses and making trading decisions, Lakefront Futures & Options, LLC utilizes volume-at-price information and the concepts of Auction Market Theory. Volume-at-price is a valuable tool similar in some ways to Market Profile, which utilizes time-at-price. Volume-at-price is displayed as a histogram along the price (vertical) scale and builds across the chart as traded volume occurs at each price. This view is sometimes referred to as a volume profile or VAP (volume-at-price) profile.

Volume-at-price analysis provides valuable information about what prices have seen the heaviest institutional interest and can give insight into where the smart money is accumulating and distributing. While traditional indicators are often simply derivations of price information, volume-at-price provides unique additional information that is not available to traders only using traditional technical analysis methods.

By applying volume profiles to specific areas of the chart, information can be drawn out of the price action identifying areas of support and resistance as well as trend information. We refer to the areas of heaviest volume within the volume profile histogram as high-volume areas, or HVA's. The location of HVA's and the price action around them are determinants in forming trade setups and determining expectations and the probabilities of subsequent price action.

Volume-at-price analysis is applicable and useful at all degrees of scale, from weekly charts to 1-minute charts and everything in between. Performing this type of analysis in multiple timeframes allows us to integrate the broad view of what the market is doing with the immediate movements at a more granular level. This allows us to take positions that not only have favorable odds of success but that also have very favorable risk/reward metrics.

In performing our analyses for our published reports as well as for our trading calls, we focus only on opportunities that have a minimum expected reward/risk ratio of 2-to-1 or better.

# Disclaimer

This publication does not constitute and should not be construed as an offer or the solicitation of any transaction to buy or sell any securities or any instruments or any derivatives of the securities mentioned herein or to participate in any particular trading strategies. Although the information contained herein has been obtained from recognized services, and sources believed to be reliable, its accuracy or completeness cannot be guaranteed. Opinions, estimates or projections expressed in this report may make assumptions regarding economic, industry and political considerations and constitute current opinions, at the time of issuance, which are subject to change without notice. The products or securities mentioned in this report may not be eligible for sale in some states or countries. Their value and any income which they may produce may fluctuate and / or be adversely affected by interest rates, exchange rates and other factors.

This information is being furnished to you for informational purposes only, and on the condition that it will not form a primary basis for any investment decision. Any recommendation contained in this report is not intended to be, nor should it be construed or inferred to be, investment advice, as such investments may not be suitable for all investors. When preparing this report, no consideration to one's investment objectives, risk tolerance or other individual factors was given; as such, as with all investments, purchase or sale of any securities mentioned herein may not be suitable for all investors. By virtue of this publication, neither the Firm nor any of its employees shall be responsible for any investment decisions.

Before committing funds to ANY investment, an investor should seek professional advice. Any information relating to the tax status of financial instruments discussed herein is not intended to provide tax advice, or to be used by anyone to provide tax advice. Investors are urged to consult an independent tax professional for advice concerning their particular circumstances. Past performance should not be taken as an indication or guarantee of future performance, and no representation or warranty, either expressed or implied, is made regarding future performance.

The authors of this report may, from time to time, have long or short positions in, and buy or sell the securities or derivatives (including options) of the companies mentioned herein. Additional information relative to securities, other financial products, or issuers discussed in this report is available upon request.

***Please keep in mind that futures trading involves substantial risk of loss and is not suitable for every investor.***