



research@lakefrontfutures.com

1.312.347.3888

Agriculture Daily Report

Wednesday, April 6th ,2016

Table of Contents

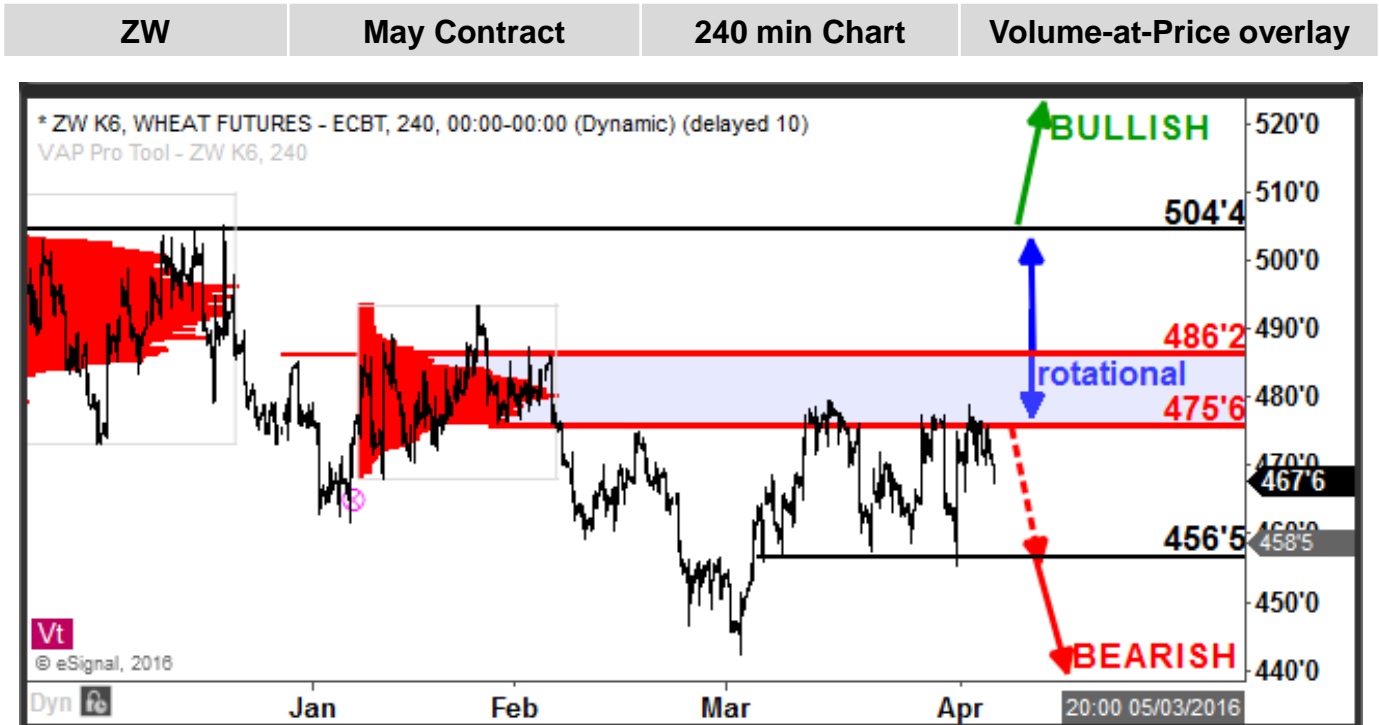
Page 2:	Corn, Wheat
Page 3:	Soybeans, Bean Oil
Page 4:	Bean Meal, Lean Hogs
Page 5:	Live Cattle
Page 6:	Core Methodology
Page 7:	Disclaimer

Disclaimer: This brief statement does not disclose all of the risks and other significant aspects of trading in futures and options. You should carefully consider whether trading is appropriate for you in light of your experience, objectives, financial resources and other relevant circumstances. Futures and options trading involve substantial risk of loss and are not suitable for everyone. This material should be construed as market commentary, merely observing economic, political and/or market condition, and not intended to refer to any particular trading strategy, promotional element or quality of service provided Lakefront Futures & Options, LLC. Lakefront Futures & Options, LLC is not responsible for any redistribution of this material by third parties, or any trading decisions taken by persons not intended to view this material. This material is owned by Lakefront Futures & Options, LLC and may not be redistributed. Please contact a Lakefront Futures & Options representative/broker for any specific trade advice.

Corn has dropped after a rejection at 369'4 and we remain bearish below 354'2 which shifts lower as resistance.

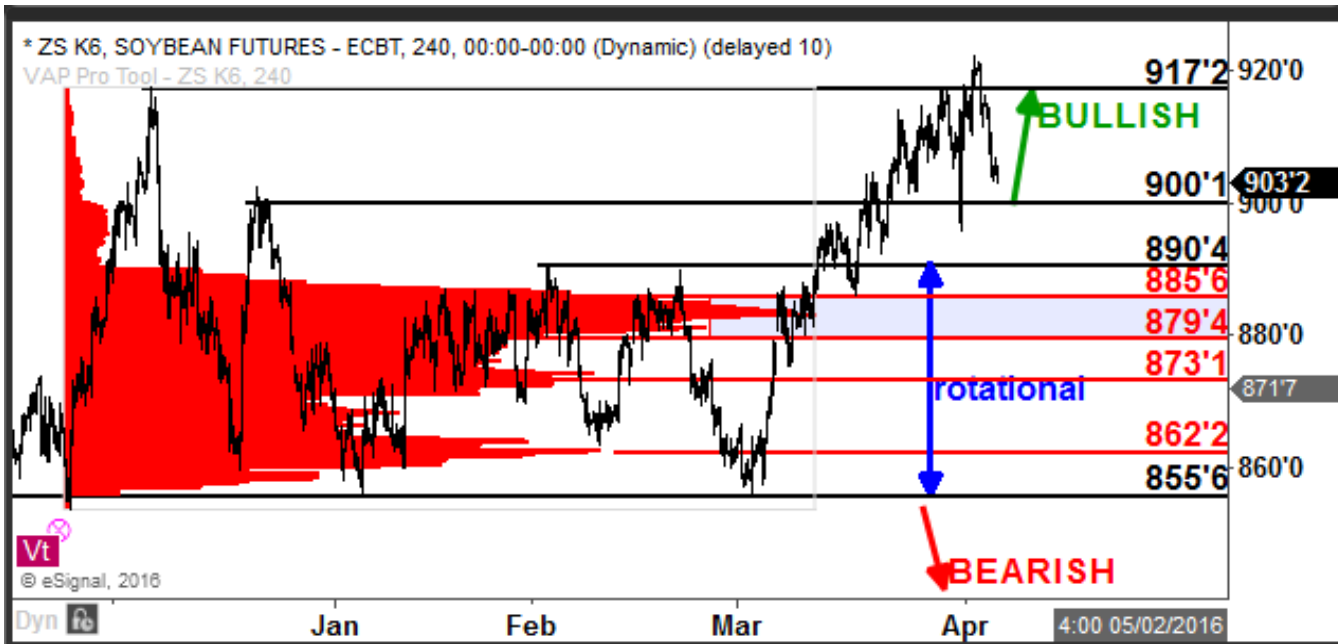


Wheat has been rejected at the 475'6 level and has traded back into support at 456'5, which if broken, favors a continuation lower into early March lows. Should 456'5 hold as support, it would favor a move back into 475'6-486'2 zone which should be a formidable area of resistance.



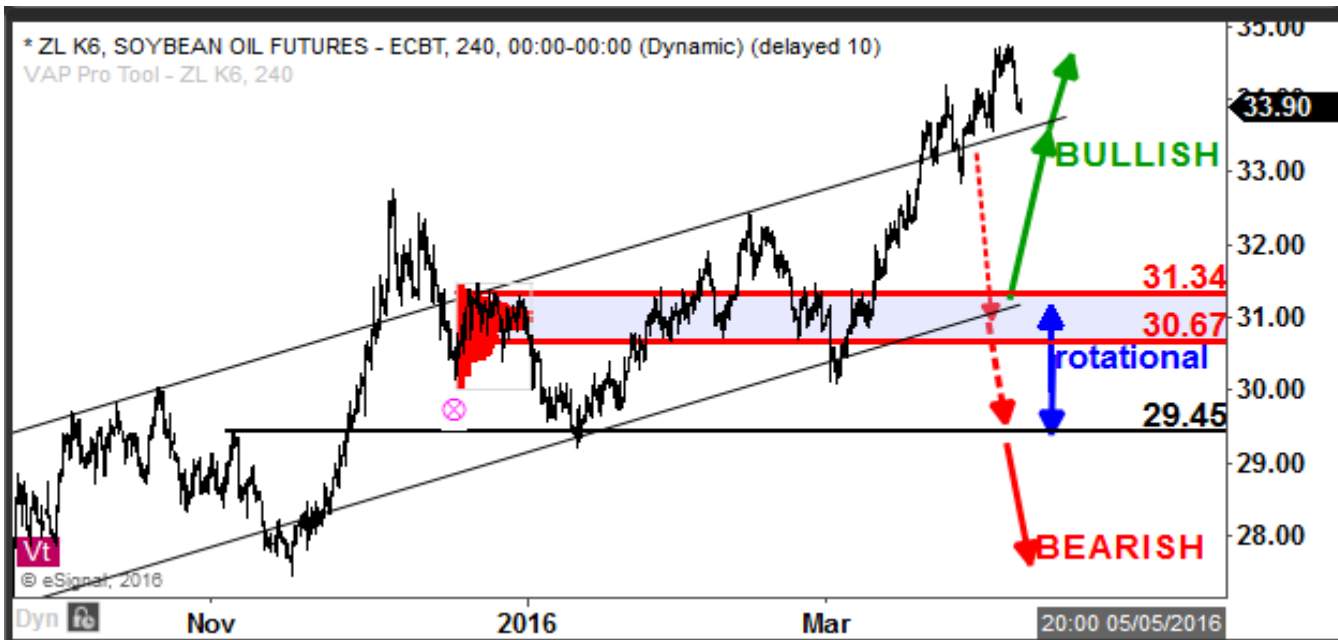
Soybeans Has moved back below 917'2 after a brief probe above, which if held as resistance now, would target a pullback into 900'1.

ZS	May Contract	240 min Chart	Volume-at-Price overlay
----	--------------	---------------	-------------------------

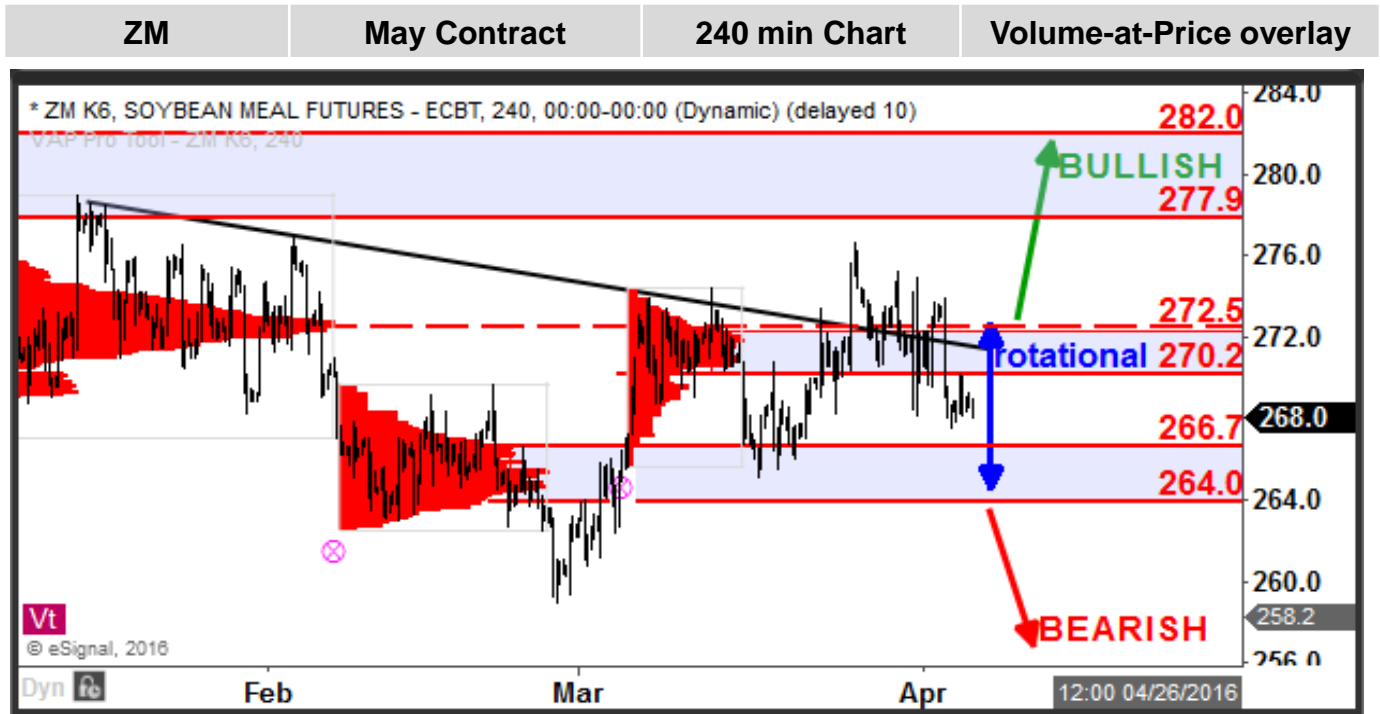


Soybean Oil has extended higher above trend line resistance therefore we expect this upside move to exhaust itself fairly soon with 32.40 shifting higher as support. A break back inside the channel would indicate a near-term top as well.

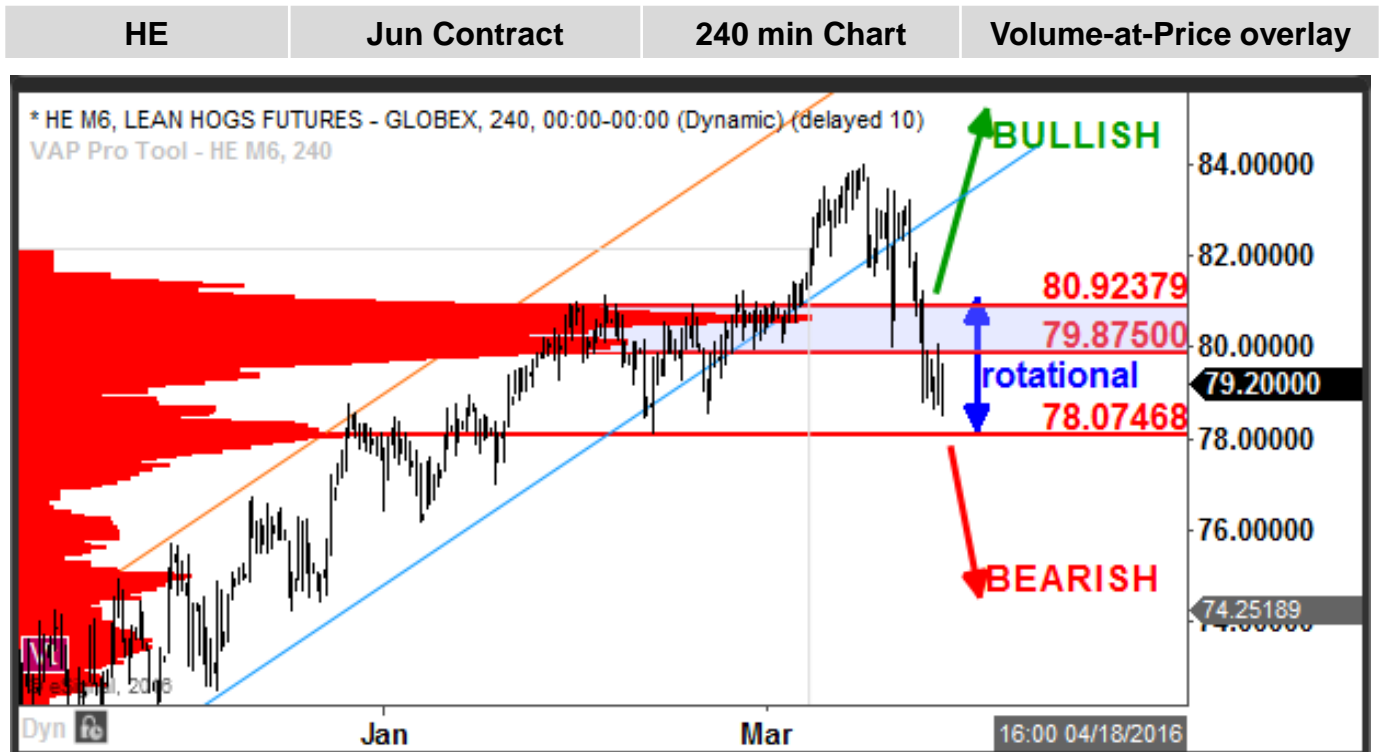
ZL	May Contract	240 min Chart	Volume-at-Price overlay
----	--------------	---------------	-------------------------



Soybean Meal has broken support at 270-272 which now shifts lower as resistance. If held, it would favor a further drop into 264-266.7.

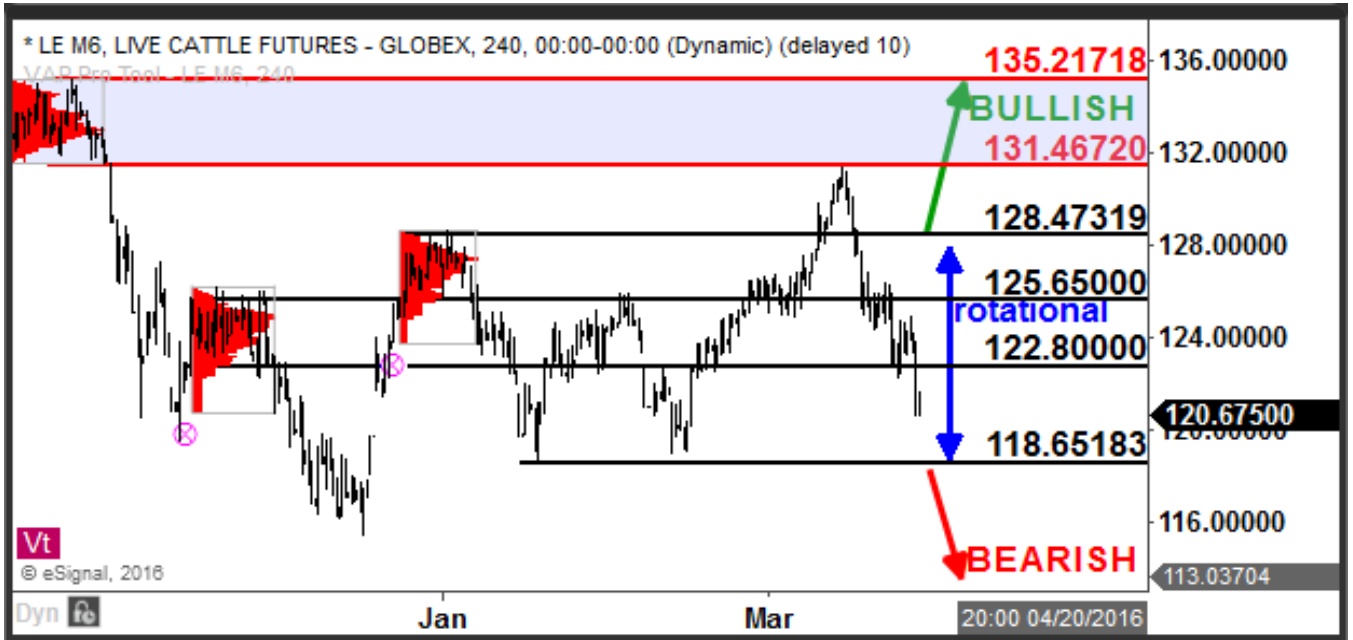


Lean Hogs has pulled back below HVA support at 79.875-80.923, which if held as resistance, favors a further drop into 78.07 and would negate the near-term bullish bias. Above 80.92 would favor bullish action again. Below 78.074 would change the bias to bearish.



Live Cattle We favor a further pullback below 122.80 with rotational support/target at 118.65.

LE	Jun Contract	240 min Chart	Volume-at-Price overlay
----	--------------	---------------	-------------------------



Core Methodology

In performing our analyses and making trading decisions, Lakefront Futures & Options, LLC utilizes volume-at-price information and the concepts of Auction Market Theory. Volume-at-price is a valuable tool similar in some ways to Market Profile, which utilizes time-at-price. Volume-at-price is displayed as a histogram along the price (vertical) scale and builds across the chart as traded volume occurs at each price. This view is sometimes referred to as a volume profile or VAP (volume-at-price) profile.

Volume-at-price analysis provides valuable information about what prices have seen the heaviest institutional interest and can give insight into where the smart money is accumulating and distributing. While traditional indicators are often simply derivations of price information, volume-at-price provides unique additional information that is not available to traders only using traditional technical analysis methods.

By applying volume profiles to specific areas of the chart, information can be drawn out of the price action identifying areas of support and resistance as well as trend information. We refer to the areas of heaviest volume within the volume profile histogram as high-volume areas, or HVA's. The location of HVA's and the price action around them are determinants in forming trade setups and determining expectations and the probabilities of subsequent price action.

Volume-at-price analysis is applicable and useful at all degrees of scale, from weekly charts to 1-minute charts and everything in between. Performing this type of analysis in multiple timeframes allows us to integrate the broad view of what the market is doing with the immediate movements at a more granular level. This allows us to take positions that not only have favorable odds of success but that also have very favorable risk/reward metrics.

In performing our analyses for our published reports as well as for our trading calls, we focus only on opportunities that have a minimum expected reward/risk ratio of 2-to-1 or better.

Disclaimer

This publication does not constitute and should not be construed as an offer or the solicitation of any transaction to buy or sell any securities or any instruments or any derivatives of the securities mentioned herein or to participate in any particular trading strategies. Although the information contained herein has been obtained from recognized services, and sources believed to be reliable, its accuracy or completeness cannot be guaranteed. Opinions, estimates or projections expressed in this report may make assumptions regarding economic, industry and political considerations and constitute current opinions, at the time of issuance, which are subject to change without notice. The products or securities mentioned in this report may not be eligible for sale in some states or countries. Their value and any income which they may produce may fluctuate and / or be adversely affected by interest rates, exchange rates and other factors.

This information is being furnished to you for informational purposes only, and on the condition that it will not form a primary basis for any investment decision. Any recommendation contained in this report is not intended to be, nor should it be construed or inferred to be, investment advice, as such investments may not be suitable for all investors. When preparing this report, no consideration to one's investment objectives, risk tolerance or other individual factors was given; as such, as with all investments, purchase or sale of any securities mentioned herein may not be suitable for all investors. By virtue of this publication, neither the Firm nor any of its employees shall be responsible for any investment decisions.

Before committing funds to ANY investment, an investor should seek professional advice. Any information relating to the tax status of financial instruments discussed herein is not intended to provide tax advice, or to be used by anyone to provide tax advice. Investors are urged to consult an independent tax professional for advice concerning their particular circumstances. Past performance should not be taken as an indication or guarantee of future performance, and no representation or warranty, either expressed or implied, is made regarding future performance.

The authors of this report may, from time to time, have long or short positions in, and buy or sell the securities or derivatives (including options) of the companies mentioned herein. Additional information relative to securities, other financial products, or issuers discussed in this report is available upon request.

Please keep in mind that futures trading involves substantial risk of loss and is not suitable for every investor.